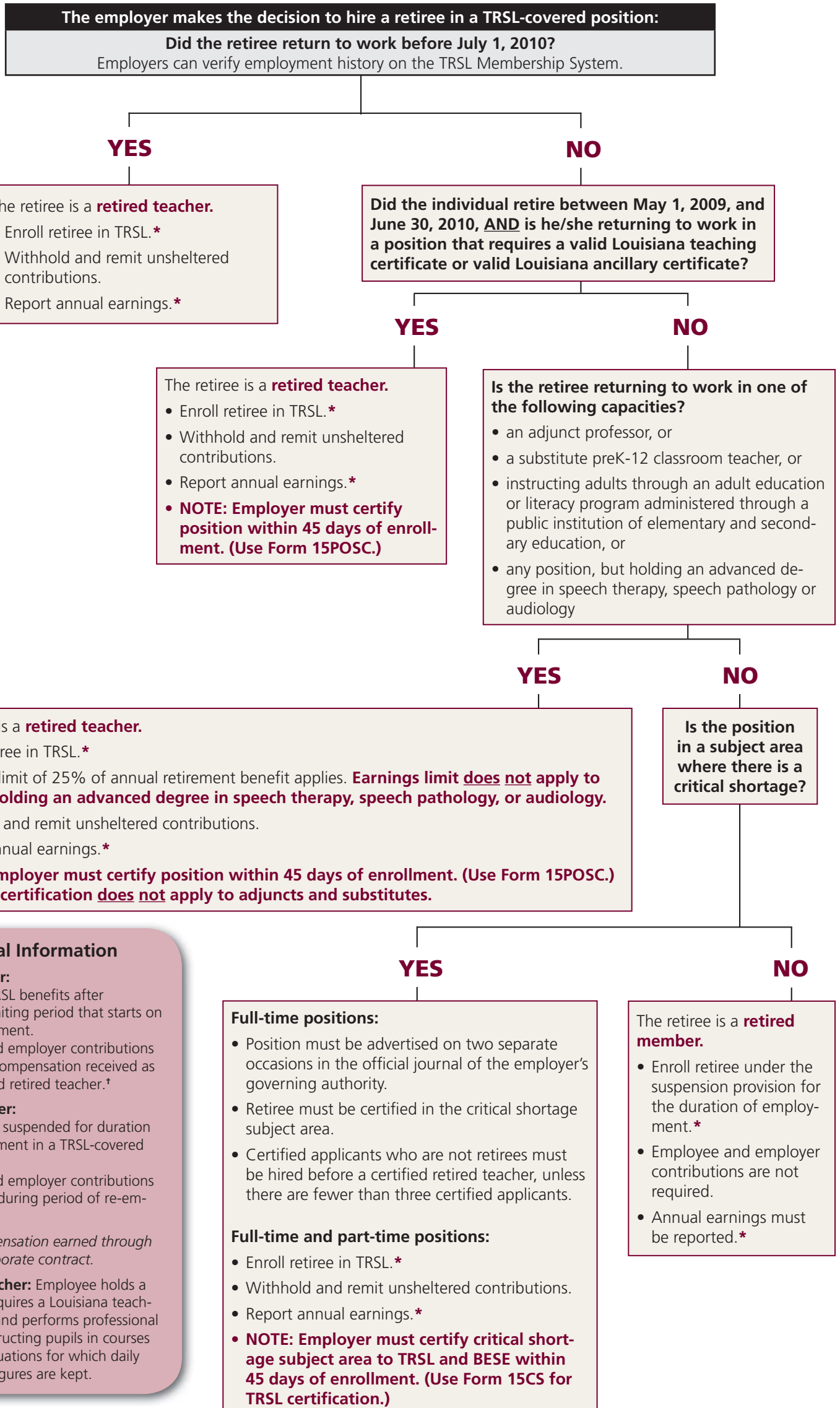


Employing a TRSL Retiree

This chart reflects changes to return-to-work laws effective July 1, 2012.



Additional Information

Retired teacher:

- » Eligible for TRSL benefits after 12-month waiting period that starts on date of retirement.
- » Employee and employer contributions required on compensation received as a re-employed retired teacher.†

Retired member:

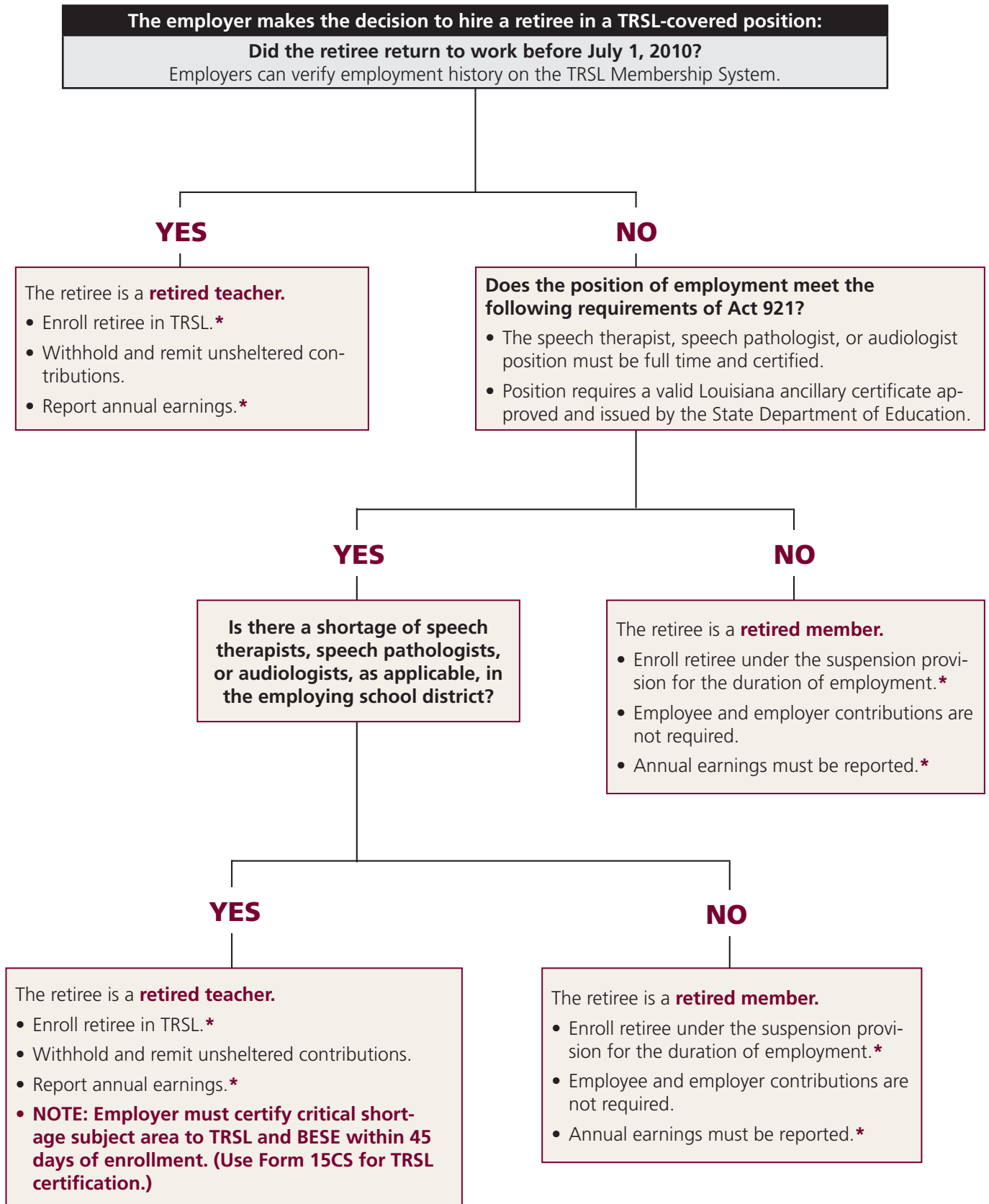
- » TRSL benefits suspended for duration of re-employment in a TRSL-covered position.†
- » Employee and employer contributions not required during period of re-employment.

†Includes compensation earned through contract or corporate contract.

Classroom teacher: Employee holds a position that requires a Louisiana teaching certificate, and performs professional activities of instructing pupils in courses in classroom situations for which daily attendance figures are kept.

Employing Retirees as Speech Therapists, Speech Pathologists, or Audiologists

This chart reflects changes to return-to-work laws effective July 1, 2012.



Additional Information

Retired teacher:

- » Eligible for TRSL benefits after 12-month waiting period that starts on date of retirement.
- » Employee and employer contributions required on compensation received as a re-employed retired teacher.†

Retired member:

- » TRSL benefits suspended for duration of re-employment in a TRSL-covered position.†
- » Employee and employer contributions not required during period of re-employment.

†Includes compensation earned through contract or corporate contract.

Classroom teacher: Employee holds a position that requires a Louisiana teaching certificate, and performs professional activities of instructing pupils in courses in classroom situations for which daily attendance figures are kept.