

A large, vibrant yellow brushstroke graphic with a textured, hand-painted appearance. It is positioned in the center of the page, partially overlapping a thin green rectangular border. The brushstroke is irregular in shape, with some areas appearing thicker and more saturated than others, giving it a dynamic and energetic feel.

# LION UP

## ACTIVITY BOOK

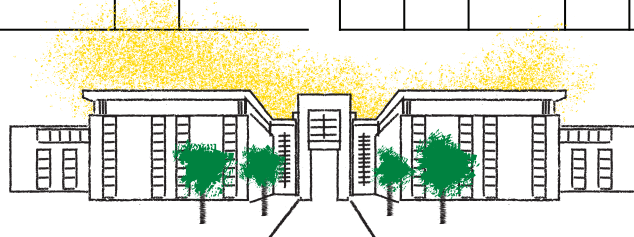
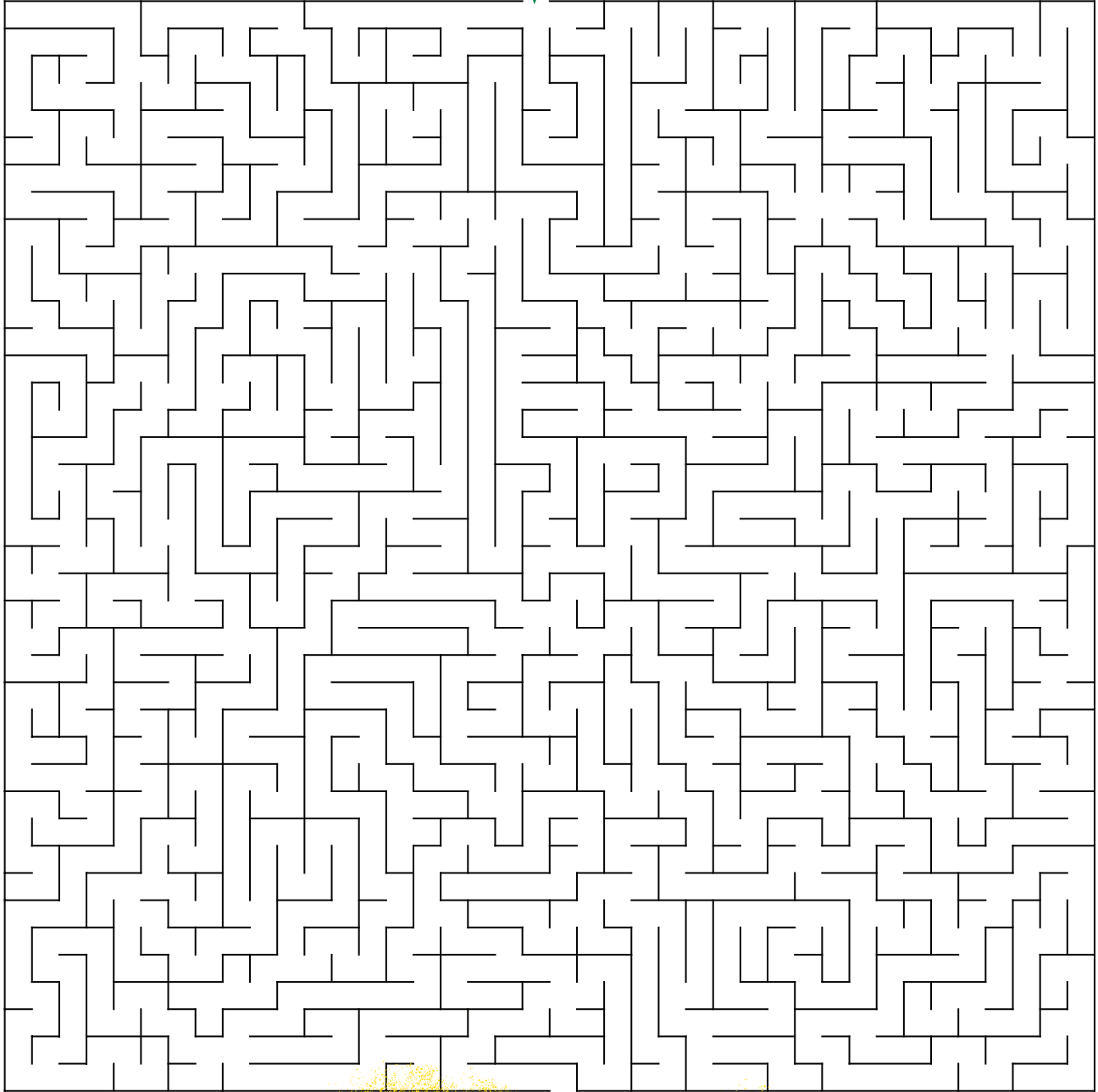
---

GREAT FOR QUARANTINES,  
BETWEEN CLASSES,  
OR LONELY SATURDAY NIGHTS

SOUTHEASTERN  
LOUISIANA UNIVERSITY

# GET TO CLASS!

*Or that feeling when you're late for class and the only parking spots left are on North Campus. :/*



*You made it!*  
Hopefully you didn't cheat  
and go around the maze.

# AROUND CAMPUS

*You don't know where some of these buildings are located on campus, do you?*

P	X	G	N	R	E	E	M	S	P	B	D	D	G	H	C	S	R	Y	S
U	I	U	S	A	L	G	R	C	T	D	U	Y	V	Y	M	N	R	L	O
R	N	Y	I	T	M	E	A	I	G	G	R	E	S	D	E	A	A	A	U
S	J	I	T	D	K	W	N	L	A	E	E	A	R	O	R	M	L	T	T
L	I	O	V	C	S	S	E	S	L	X	H	D	Y	B	N	I	U	N	H
E	P	H	I	E	L	T	C	N	F	I	O	E	I	A	Q	L	M	E	E
Y	W	V	O	E	R	E	U	M	L	D	V	L	E	M	F	C	N	R	A
O	D	D	Y	K	N	S	L	D	P	A	L	E	N	Y	W	C	I	K	S
R	R	S	M	T	G	M	I	P	E	A	N	H	H	P	J	M	C	O	T
E	T	T	E	R	R	A	G	T	I	N	Z	I	N	T	Y	U	E	O	E
S	T	R	A	W	B	E	R	R	Y	S	T	A	D	I	U	M	N	B	R
L	Q	N	D	L	I	K	O	D	F	C	M	U	Y	R	Q	O	T	T	N
B	J	B	E	M	C	M	D	H	I	G	E	W	N	Y	A	H	E	X	O
C	A	M	P	B	E	L	L	W	B	O	V	N	D	I	Q	C	R	E	A
Y	T	T	D	M	S	S	U	P	M	A	C	H	T	R	O	N	Y	T	K
P	H	Y	S	I	C	A	L	P	L	A	N	T	P	E	L	N	L	A	S
U	W	M	O	T	V	H	U	W	J	N	X	E	R	E	R	N	X	W	L
G	I	R	E	T	N	E	C	N	O	T	G	N	I	N	N	E	P	I	D
S	C	L	A	R	K	L	C	K	D	Q	C	D	Z	J	G	P	A	E	P
U	F	P	P	G	R	W	W	G	K	P	A	D	I	Q	S	T	N	J	G

- Alumni Center
- Campbell
- Cardinal Newman
- Clark
- D Vickers
- Dugas Center
- Dyson
- Fayard
- Garrett
- McClimans
- McGehee
- Meade
- North Campus
- Pennington Center
- Physical Plant
- Pottle
- Pursley
- Sims Memorial Library
- Southeastern Oaks
- Strawberry Stadium
- Student Union
- Textbook Rental
- Tinsley
- University Center
- The Village

## Fun Fact

Strawberry Stadium was almost named Blueberry Stadium. And most of these fun facts may be totally bogus.

# ATHLETICS

*Decoding words is a sport, right? Lion Up!*

---

elbabsa

1

---

cs\_rnyorcusto

9

---

tosbfal

2

---

t'w\_bllaneoabessmk

10

---

cscreeo

3

---

nems\_lab'aelbtk

11

---

lltfaoob

4

---

aa\_fdtk\_eidlncr

12

---

lvbyoallle

5

---

aholntusd

13

---

llhalbecyvlobea\_

6

---

pnimshcao

14

*Team*

---

tensni

7

---

mate

15

---

fgol

8

---

aymgaed

16



# ACADEMICS

*Can we just skip to spring break?*

- Arts
- Awards
- Biology
- Business
- Certification
- Chemistry
- College
- Communication
- Computer Science
- Courses
- Criminal Justice
- Curriculum
- Degree
- Diploma
- Education
- English
- Finance
- Health Sciences
- History
- Honors
- Humanities
- Instruction
- Kinesiology
- Leadership
- Learning
- Mathematics
- MBA
- Music
- Nursing
- Political Science
- Professional Sales
- Psychology
- Rankings
- Science and Technology
- Social Sciences
- Studies

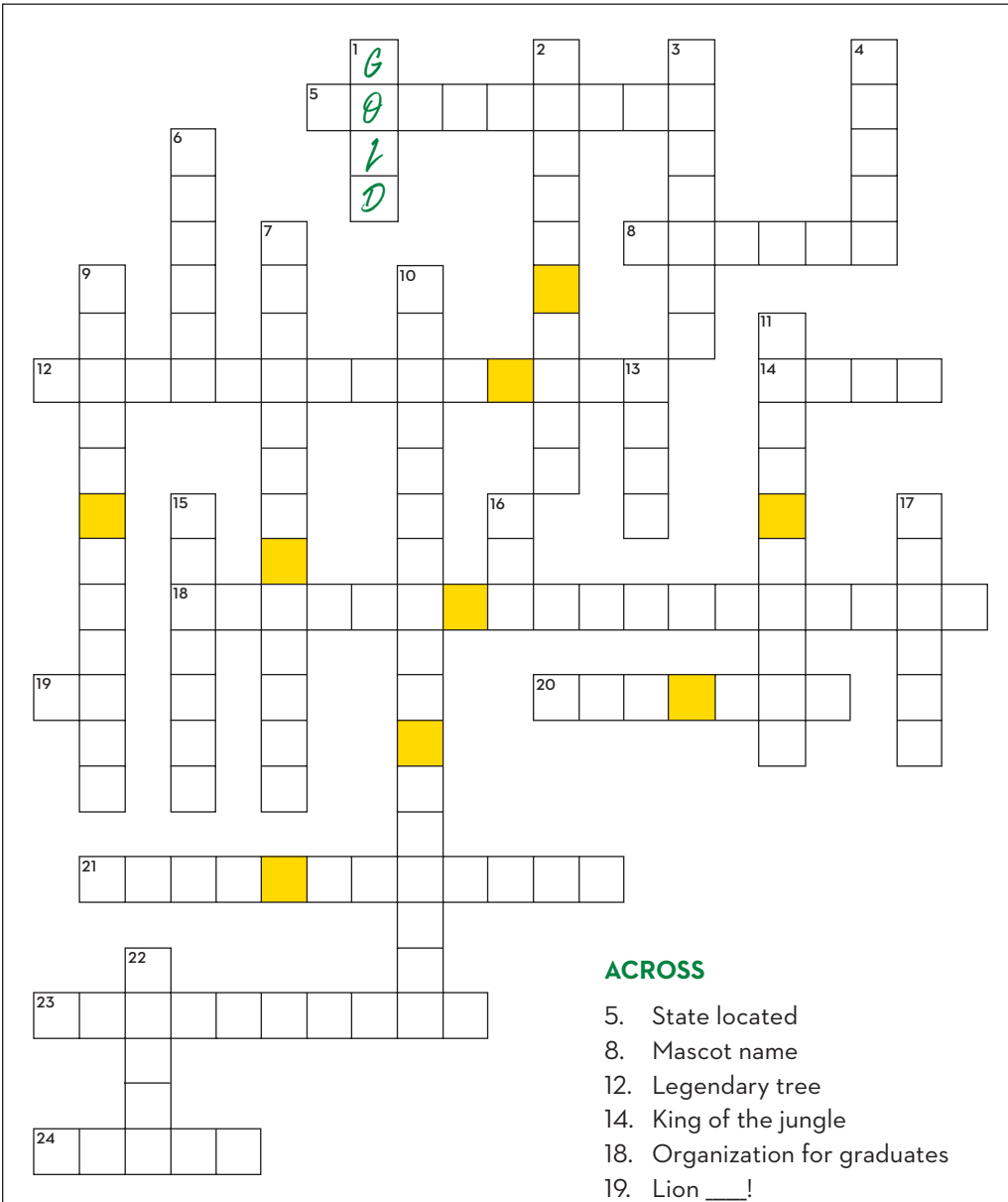
E	E	R	G	E	D	N	O	I	T	A	C	I	N	U	M	M	O	C	A
S	E	I	D	U	T	S	E	C	N	E	I	C	S	H	T	L	A	E	H
S	C	I	E	N	C	E	A	N	D	T	E	C	H	N	O	L	O	G	Y
M	M	B	A	T	S	L	M	U	L	U	C	I	R	R	U	C	C	B	Z
R	F	E	D	U	C	A	T	I	O	N	A	P	G	D	E	E	R	U	L
C	O	U	R	S	E	S	E	I	T	I	N	A	M	U	H	R	I	S	G
P	S	Y	C	H	O	L	O	G	Y	A	H	S	U	Y	I	T	M	I	K
I	M	F	H	X	N	A	R	F	E	O	U	C	I	N	K	I	I	N	I
H	U	I	O	S	G	N	I	K	N	A	R	I	S	U	J	F	N	E	N
S	S	N	C	U	Z	O	N	O	G	K	H	T	Y	N	E	I	A	S	E
R	I	A	H	D	J	I	R	S	X	F	R	A	G	R	N	C	L	S	S
E	C	N	E	I	C	S	R	E	T	U	P	M	O	C	G	A	J	L	I
D	Y	C	M	P	N	S	G	V	C	R	W	E	L	U	L	T	U	E	O
A	R	E	I	L	B	E	D	T	D	X	A	H	O	G	I	I	S	A	L
E	O	G	S	O	F	F	I	M	B	H	L	T	I	Q	S	O	T	R	O
L	T	G	T	M	C	O	L	L	E	G	E	A	B	W	H	N	I	N	G
L	S	Y	R	A	N	R	D	B	S	U	L	M	B	Y	Z	C	C	I	Y
Q	I	C	Y	Y	R	P	J	N	U	R	S	I	N	G	L	D	E	N	R
O	H	E	C	N	E	I	C	S	L	A	C	I	T	I	L	O	P	G	F
O	A	W	A	R	D	S	E	C	N	E	I	C	S	L	A	I	C	O	S

## Fun Fact

Can't decide on a major? Double major! Who doesn't love a Dancing Nurse... or an Engineering Flautist.

# LION PRIDE

*The average pride has about 15 lions. We have way more.*



## ACROSS

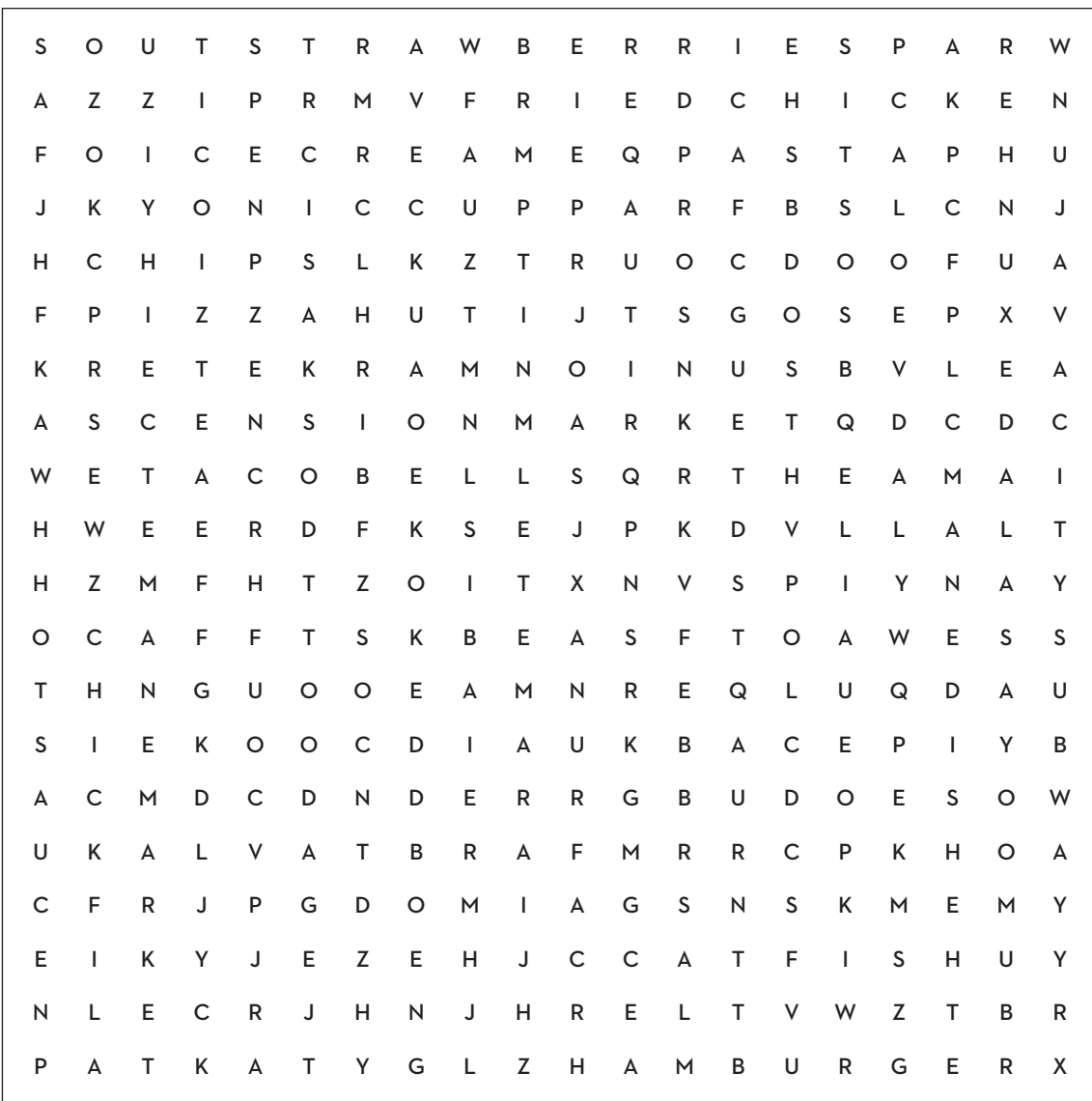
5. State located
8. Mascot name
12. Legendary tree
14. King of the jungle
18. Organization for graduates
19. Lion \_\_\_\_!
20. Common name of place to work out
21. Number of main campus acres
23. \_\_\_\_ Stadium
24. \_\_\_\_ A. Sims Memorial Library

## DOWN

1. Warm official color
2. Anthem
3. \_\_\_\_, America
4. A company of lions, or justifiable self-respect
6. Number of official Southeastern Athletics sports
7. Campus food hub
9. Location of Textbook Rental and Financial Aid
10. Basketball and commencements happen here
11. Begins with "We hail Thee now Southeastern, For Thee we'll always stand"
13. Radio Station
15. Pat Kenelly \_\_\_\_ at Alumni Field
16. Common name of student organization with Legislative, Executive, and Judicial branches
17. Material of lion statue in Friendship Circle
22. Cool official color

# CAMPUS EATS

*Go ahead... leave this puzzle half finished and go eat. You know you want to.*



- Ascension Market
- Catfish
- Chick-fil-A
- Chips
- Coffee
- Coke
- Cookies
- Food Court
- Frappuccino
- Fried Chicken
- Fries
- Gumbo
- Hamburger
- Hot Dog
- Hot Sauce
- Ice Cream
- Jambalaya
- Java City
- Mane Dish
- Mane Market
- Mooya
- Panda Express
- Pasta
- Pizza
- Pizza Hut
- Red Beans
- Rice
- Salad
- Soup
- Starbucks
- Strawberries
- Subway
- Taco Bell
- The Marketplace
- Union Market
- Wrap

## Fun Fact

Our campus Subway was once located next to the mail center. The result was campus mail that smelled like fresh baked bread and very long lines at Subway.

# LIONS ONLINE

*Click, click, click. Did I just buy that?*

---

opnu#!il  
1

---

mooled  
9

---

uu#tnaserroehsot  
2

---

eymn\_d  
10

---

m#atcscssurtee  
3

---

ewiblam  
11

---

uesunedethosta.r  
4

---

loente  
12

---

niramgsta  
5

---

i\_odvreggelo  
13

---

koaoefcb  
6

---

ee\_teoglgmo  
14

---

twtetir  
7

---

n.oolestpirstne  
15

---

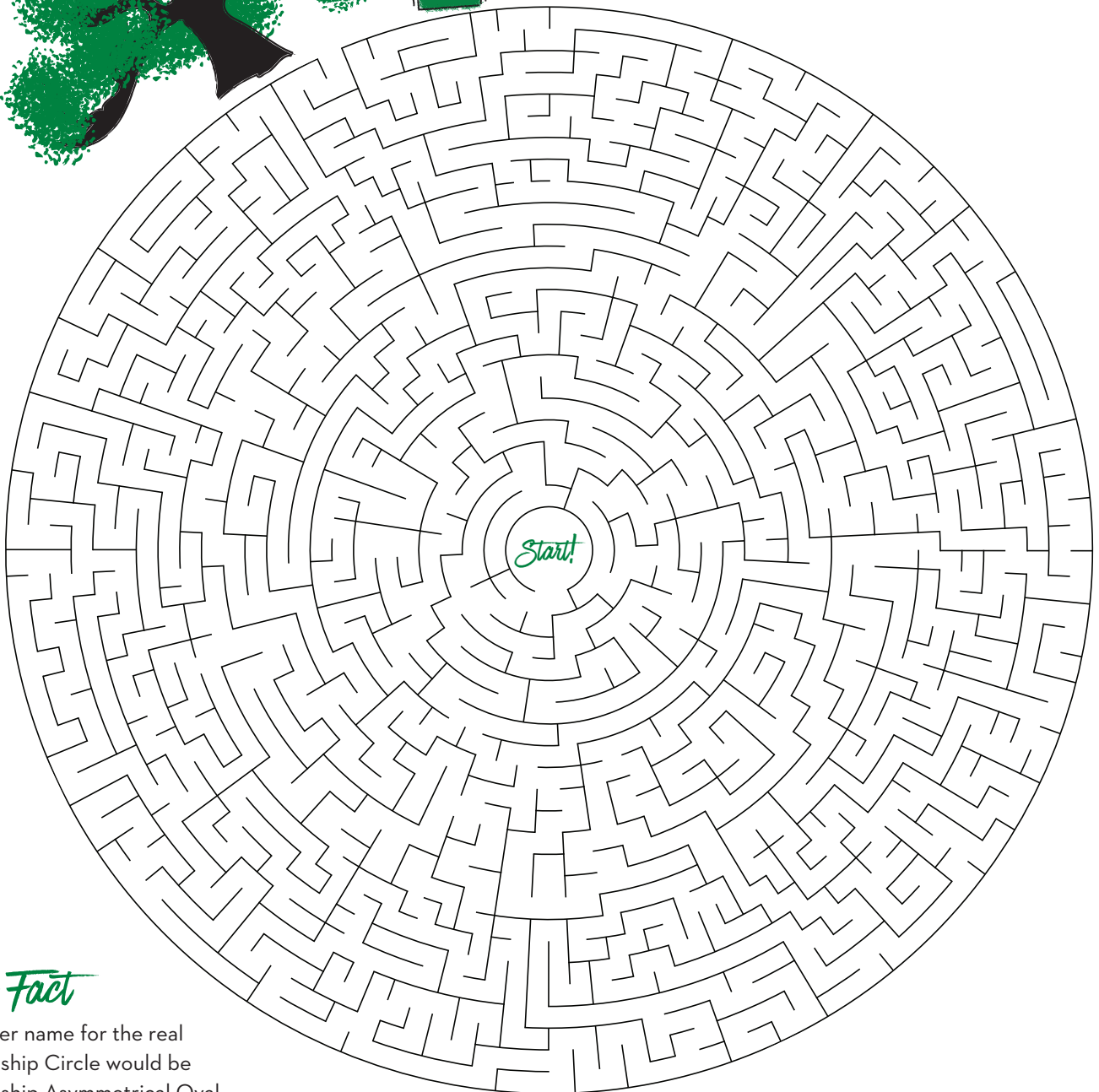
bslensrgtaotgeh.nazmuioae  
8

---

mbtcog.oualaretrihe  
16

# HOMECOMING HUNGER

*You're in the middle of a crowded Friendship Circle and your stomach is roaring for a hot dog.  
Make your way to the tailgaters cooking hot dogs near Friendship Oak.*



## *Fun Fact*

A better name for the real Friendship Circle would be Friendship Asymmetrical Oval.

# LION LIFE

*Real lion stuff... although you may also have a mane if you haven't cut your hair in months.*

C	D	T	B	F	O	R	C	E	F	U	L	V	A	G	T	E	G	T	I
L	H	H	A	R	T	T	T	A	E	M	O	L	A	A	N	C	R	I	B
D	S	M	Y	R	O	T	I	R	R	E	T	M	C	F	A	N	A	N	L
D	A	V	W	G	G	E	O	I	X	O	E	G	Y	E	T	E	S	T	E
Q	L	H	F	B	N	Z	L	N	Q	N	I	Q	D	D	U	S	S	E	L
A	P	J	T	H	I	R	Z	A	L	B	N	X	N	I	R	E	Y	L	B
D	H	J	T	G	K	F	L	G	R	G	I	E	E	R	E	R	L	L	A
I	A	E	K	N	N	L	B	R	S	E	G	F	D	P	N	P	I	I	D
Z	E	J	W	M	T	E	N	Y	I	Q	H	L	I	A	F	J	M	G	I
T	B	M	X	K	Y	B	R	G	A	T	T	T	N	X	H	N	A	E	M
E	C	R	E	I	F	H	U	T	A	L	C	Q	N	R	R	S	F	N	R
B	N	X	A	I	A	P	U	C	S	H	P	E	O	A	D	V	A	C	O
D	E	I	S	Q	Z	J	W	F	O	H	F	A	L	C	P	J	G	E	F
W	X	L	L	W	E	A	U	L	E	E	R	U	D	Z	C	H	U	N	T
K	P	O	Z	E	A	R	H	I	O	K	C	W	K	O	Q	L	C	L	D
E	A	G	Z	Z	F	L	R	A	U	S	L	U	A	W	Q	A	U	K	M
B	P	J	J	I	U	B	C	T	U	A	Y	T	T	X	E	M	J	Z	X
P	A	W	O	E	E	N	L	M	W	R	Y	A	N	N	N	M	E	K	U
L	I	O	N	E	S	S	E	Y	X	P	P	Q	A	A	X	A	M	I	S
J	L	N	F	K	W	T	L	R	O	I	V	M	P	R	V	M	A	T	W

- Alpha
- Big Cat
- Claws
- Coat
- Cub
- Family
- Feline
- Fierce
- Forceful
- Formidable
- Fur
- Game
- Grass
- Hunt
- Intelligence
- King
- Lioness
- Mammal
- Mane
- Meat
- Muscular
- Nap
- Nature
- Night
- Nuzzle
- Panthera Leo
- Paw
- Play
- Presence
- Pride
- Roar
- Shade
- Strength
- Tail
- Teeth
- Territory

## Fun Fact

Lions may not be indigenous to Louisiana, but if they were, they would roar with a Cajun accent.

# COPY THAT CAT

*Using a grid is not cheating. Art majors use this technique all the time.*

