

Report on the 2007-2008 Survey of Faculty & Staff

Results for Alumni Office



Southeastern Louisiana University
Office of Institutional Research and Assessment

March 2009

Table of Contents

Background	1
Survey Method	1
Respondent and Population Characteristics	2
Results	3
How satisfied are you with the Convocation Picnic?	4
How satisfied are you with Tailgating?	6
How satisfied are you with the banquet facilities?	8
How satisfied are you with Homecoming?	10
How satisfied are you with Rock-N-Roar?	12
How satisfied are you with Golden Silence?	14
Have you joined the Alumni Association at the faculty/staff reduced price?	16
Potential Programs	18
Overall Satisfaction	19
Appendix A - 2007-2008 Survey of Faculty and Staff	21
Appendix B - Main reason for not joining Alumni Association at faculty/staff rate	24
Appendix C - What programs would you like to see offered by the Alumni Association?	33

Background

During the Spring of 2008, the Office of Institutional Research and Assessment (IR&A) conducted a survey of faculty and staff. The purposes of the survey were 1) to assess progress toward meeting the University's strategic planning benchmarks; and 2) to evaluate certain non-instructional units. The non-instructional units included in this year's survey were: Physical Plant, Internal Audit, Testing Office, Public Information, and the Alumni Office. This report will provide the results of the section regarding the Alumni Office.

Survey Method

The 2007-2008 Survey of Faculty and Staff, along with a cover letter from the Provost and the Chair of the Institutional Effectiveness Committee, was sent to all full-time faculty and staff, with the exception of the President, the Vice Presidents, and the IR Director. A total of 1,377 faculty and staff were included in the survey and received survey forms via campus mail. The information provided by the respondents was treated with strict confidentiality. A master list was maintained for purposes of follow-up only, this list was securely maintained. The master list was destroyed after data was collected. The information gained from the survey is reported for the entire survey group and individuals can not be identified with any response. Reminders to return the survey was distributed via e-mail. A second mailing was then sent to those faculty and staff who had not returned the survey. A total of 1,014 faculty and staff completed the survey and returned it to IR&A for a return rate of 74%. A copy of the survey can be found in Appendix A.

The average term of employment at Southeastern for respondents is 9.4 years, and the average age of the respondents is 44.8. These numbers reflect values very close to the population as a whole. Table 1 presents other characteristics of the respondents as compared to the population.

Table 1
Respondents and Population Characteristics

	Respondents	Population	% of Population Responding
Total	1,014	1,388	73.1%
Faculty	439	582	75.4%
Classified Staff	317	477	66.5%
Unclassified Staff	258	329	78.4%
EEO Classification			
Faculty	407	541	75.2%
Executive/Administrative/Manager	182	217	83.9%
Clerical/ Secretarial	170	190	89.5%
Professional, Non-Faculty	147	197	74.6%
Skilled Craftsman	28	95	29.5%
Service/ Maintenance	45	102	44.1%
Technical/ Paraprofessional	35	46	76.1%
Gender			
Female	650	808	80.4%
Male	364	580	62.8%
Race			
Black, Non-Hispanic	105	196	53.6%
White, Non-Hispanic	867	1,137	76.3%
Other	42	55	76.4%
Rank (Faculty Only)			
Full Professor	78	97	80.4%
Associate Professor	96	124	77.4%
Assistant Professor	102	130	48.5%
Instructor	157	222	70.7%
Tenure Status (Faculty Only)			
Tenured	170	219	77.6%
Non-Tenured, Tenure Track	95	118	80.5%
Non-Tenure Track	168	236	71.2%

Results

Faculty and staff were asked how satisfied they were with various events and services, membership in the Alumni Association, other programs they would like to see, as well as a general satisfaction item. The results for each item are presented with a set of summary points describing the data as a total group. This is followed by tables which present frequencies and mean by classification, age, race, gender, division/college, and residence.

How satisfied are you with the Convocation Picnic?

- Of the 971 faculty and staff who responded, 1% (n=8) indicated that they are very dissatisfied and 36% (n=352) are very satisfied.
- The average rating across all faculty and staff was 4.38.

Figure 1

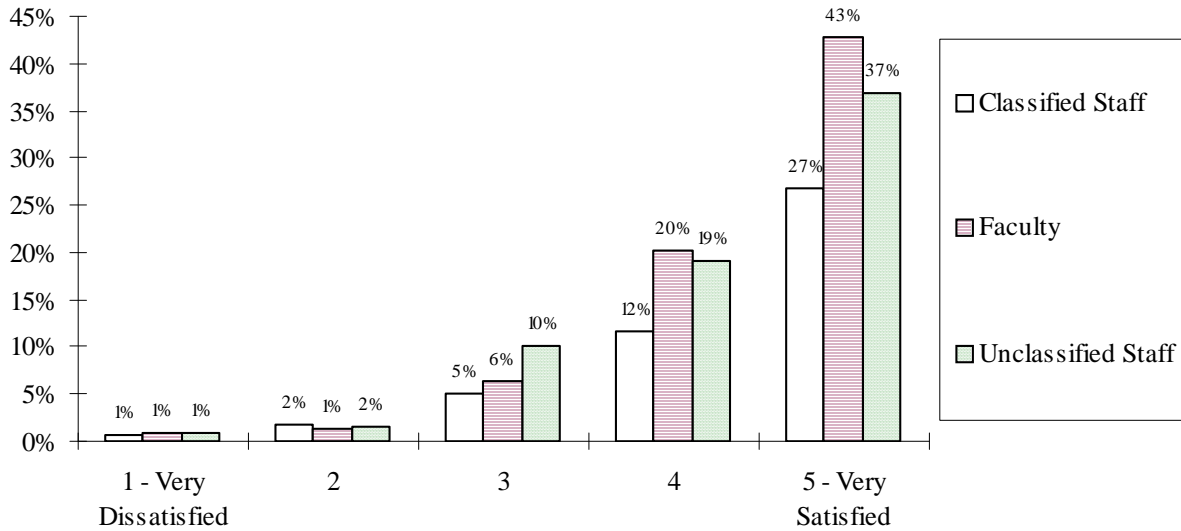


Table 2

	1 - Strongly Disagree	2	3	4	5 - Strongly Agree	Never Attended	Mean*
Classified Staff	0.7% (2)	1.7% (5)	5.0% (15)	11.6% (35)	26.8% (81)	54.3% (164)	4.36
Faculty	0.4% (9)	1.4% (6)	6.4% (27)	20.1% (85)	42.7% (180)	28.4% (120)	4.43
Unclassified Staff	0.8% (2)	1.6% (4)	10.1% (25)	19.0% (47)	36.8% (91)	31.6% (78)	4.31
20's	2.4% (3)	1.6% (2)	7.2% (9)	12.8% (16)	21.6% (27)	54.4% (68)	4.09
30's	1.0% (2)	1.5% (3)	5.8% (12)	19.9% (41)	32.0% (66)	39.8% (82)	4.34
40's	0%	1.2% (3)	6.6% (16)	22.3% (54)	37.2% (90)	32.6% (79)	4.42
50's	1.0% (3)	2.0% (6)	8.3% (25)	13.9% (42)	42.2% (128)	32.7% (99)	4.40
60 or older	0%	1.1% (1)	5.3% (5)	14.7% (14)	43.2% (41)	35.8% (34)	4.56
Asian/Pacific Islander	0%	0%	0%	27.6% (8)	44.8% (13)	27.6% (8)	4.62
Black, non-Hispanic	1.0% (1)	3.1% (3)	8.2% (8)	18.4% (18)	36.7% (36)	32.7% (32)	4.29
Hispanic	0%	0%	0%	18.2% (2)	63.6% (7)	18.2% (2)	4.78
White, non-Hispanic	0.8% (7)	1.4% (12)	7.1% (59)	16.7% (139)	35.5% (295)	38.5% (320)	4.37
Female	1.0% (6)	1.5% (9)	5.7% (35)	15.5% (96)	36.0% (223)	40.4% (250)	4.41

	1 - Strongly Disagree	2	3	4	5 - Strongly Agree	Never Attended	Mean*
Male	0.6% (2)	1.7% (6)	9.1% (32)	20.2% (71)	36.6% (129)	31.8% (112)	4.33
Academic Affairs	0.6% (4)	1.5% (11)	6.3% (45)	18.3% (130)	39.4% (280)	33.8% (240)	4.43
Student Affairs	1.9% (1)	1.9% (1)	5.7% (3)	13.2% (7)	30.2% (16)	47.2% (25)	4.29
Administration & Finance	1.9% (3)	1.2% (2)	8.0% (13)	13.6% (22)	22.2% (36)	53.1% (86)	4.13
University Advancement	0%	0%	16.7% (1)	16.7% (1)	50.0% (3)	16.7% (1)	4.40
President's Office	0%	2.5% (1)	12.5% (5)	17.5% (7)	42.5% (17)	25.0% (10)	4.33
Hammond	0.8% (3)	1.8% (7)	7.9% (31)	18.2% (71)	42.2% (165)	29.2% (114)	4.40
Ponchatoula	0%	1.1% (1)	1.1% (1)	17.6% (16)	40.7% (37)	39.6% (36)	4.62
Tangipahoa	0.6% (1)	1.2% (2)	8.5% (14)	15.2% (25)	27.4% (45)	47.0% (77)	4.28
St. Tammany	2.7% (3)	1.8% (2)	7.3% (8)	16.4% (18)	35.5% (39)	36.4% (40)	4.26
East Baton Rouge	0%	0%	6.8% (5)	17.8% (13)	38.4% (28)	37.0% (27)	4.50
Livingston	0%	1.1% (1)	4.6% (4)	16.1% (14)	27.6% (24)	50.6% (44)	4.42
Rest of Louisiana	0%	2.0% (1)	5.9% (3)	19.6% (10)	25.5% (13)	47.1% (24)	4.30
Mississippi	25.0% (1)	25.0% (1)	25.0% (1)	0%	25.0% (1)	0%	2.75
Total	0.8% (8)	1.5% (15)	6.9% (67)	17.2% (167)	36.3% (352)	37.3% (362)	4.38

* Mean does not include NA responses.

How satisfied are you with Tailgating?

- Of the 961 faculty and staff who responded, 1% (n=10) indicated that they are very dissatisfied and 18% (n=174) are very satisfied.
- The average rating across all faculty and staff was 4.22.

Figure 2

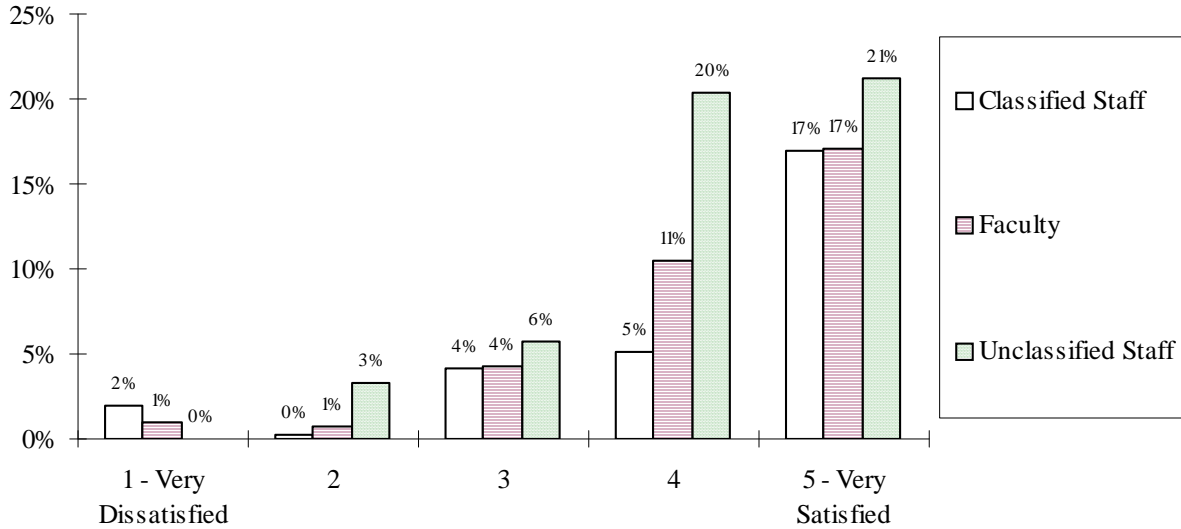


Table 3

	1 - Strongly Disagree	2	3	4	5 - Strongly Agree	Never Attended	Mean*
Classified Staff	2.0% (6)	0.3% (1)	4.1% (12)	5.1% (15)	16.9% (50)	71.6% (212)	4.21
Faculty	1.0% (4)	0.7% (3)	4.3% (18)	10.5% (44)	17.1% (72)	66.4% (294)	4.26
Unclassified Staff	0%	3.3% (8)	5.7% (14)	20.4% (50)	21.2% (52)	49.4% (121)	4.18
20's	2.4% (3)	2.4% (3)	7.1% (9)	14.3% (30)	17.5% (22)	56.3% (71)	3.96
30's	0.5% (1)	1.0% (2)	4.4% (9)	14.6% (30)	22.4% (46)	57.1% (117)	4.34
40's	0.4% (1)	1.7% (4)	5.5% (13)	10.5% (25)	14.3% (34)	67.5% (160)	4.13
50's	1.7% (5)	0.7% (2)	3.7% (11)	10.0% (30)	19.1% (57)	64.9% (194)	4.26
60 or older	0%	1.1% (1)	2.1% (2)	6.4% (6)	16.0% (15)	74.5% (70)	4.46
Asian/Pacific Islander	0%	0%	6.9% (2)	10.3% (3)	13.8% (4)	69.0% (20)	4.22
Black, non-Hispanic	1.1% (1)	1.1% (1)	6.3% (6)	13.7% (13)	13.7% (13)	64.2% (61)	4.06
Hispanic	0%	0%	0%	9.1% (1)	45.5% (5)	45.5% (5)	4.83
White, non-Hispanic	1.1% (9)	1.3% (11)	4.4% (36)	11.2% (92)	18.4% (152)	63.6% (525)	4.22
Female	0.8% (5)	0.5% (3)	2.5% (15)	8.4% (51)	17.5% (106)	70.3% (427)	4.39

	1 - Strongly Disagree	2	3	4	5 - Strongly Agree	Never Attended	Mean*
Male	1.4% (5)	2.5% (9)	8.2% (29)	16.4% (58)	19.2% (68)	52.3% (185)	4.04
Academic Affairs	0.9% (6)	1.0% (7)	3.4% (24)	11.0% (77)	17.2% (121)	66.5% (467)	4.28
Student Affairs	0%	1.9% (1)	11.3% (6)	9.4% (5)	20.8% (11)	56.6% (30)	4.13
Administration & Finance	2.5% (4)	0.6% (1)	7.5% (12)	9.3% (15)	19.9% (32)	60.2% (97)	4.09
University Advancement	0%	0%	20.0% (1)	40.0% (2)	0%	40.0% (2)	3.67
President's Office	0%	7.5% (3)	2.5% (1)	25.0% (10)	25.0% (10)	40.0% (16)	4.13
Hammond	0.8% (3)	1.0% (4)	5.5% (21)	15.7% (60)	23.8% (91)	53.1% (203)	4.30
Ponchatoula	1.1% (1)	0%	1.1% (1)	9.8% (9)	16.3% (15)	71.7% (66)	4.42
Tangipahoa	2.5% (4)	0.6% (1)	6.8% (11)	7.4% (12)	16.0% (26)	66.7% (108)	4.02
St. Tammany	1.8% (2)	6.4% (7)	2.7% (3)	6.4% (7)	12.7% (14)	70.0% (77)	3.73
East Baton Rouge	0%	0%	4.1% (3)	8.2% (6)	9.6% (7)	78.1% (57)	4.25
Livingston	0%	0%	2.3% (2)	11.5% (10)	17.2% (15)	69.0% (60)	4.48
Rest of Louisiana	0%	0%	5.9% (3)	9.8% (5)	11.8% (6)	72.5% (37)	4.21
Mississippi	0%	0%	0%	0%	0%	100.0% (4)	N/A
Total	1.0% (10)	1.2% (12)	4.6% (44)	11.3% (109)	18.1% (174)	63.7% (612)	4.22

* Mean does not include NA responses.

How satisfied are you with the banquet facilities?

- Of the 967 faculty and staff who responded, 1% (n=8) indicated that they are very dissatisfied and 42% (n=404) are very satisfied.
- The average rating across all faculty and staff was 4.50.

Figure 3

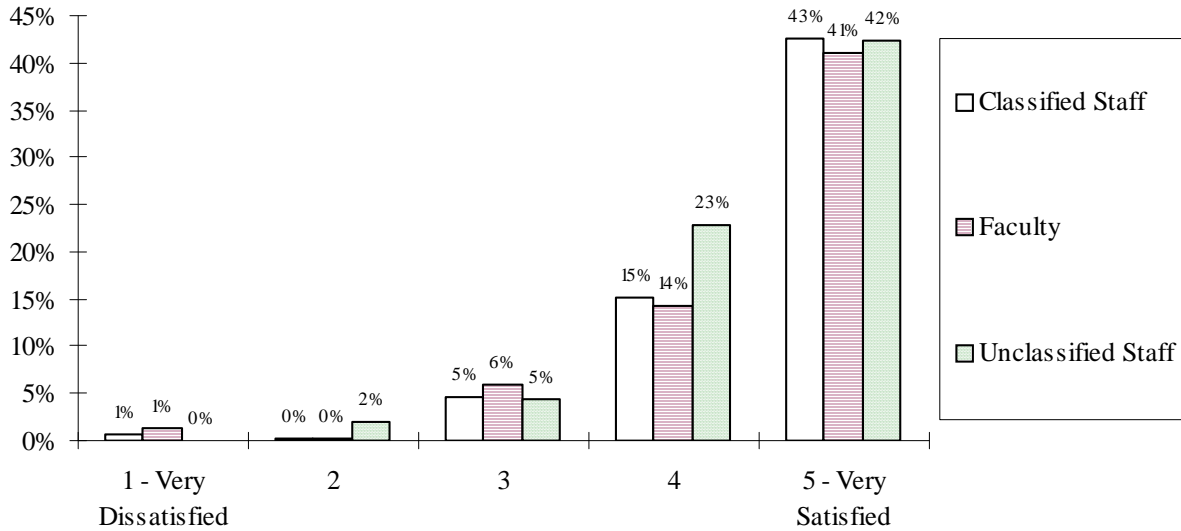


Table 4

	1 - Strongly Disagree	2	3	4	5 - Strongly Agree	Never Attended	Mean*
Classified Staff	0.7% (2)	0.3% (1)	4.7% (14)	15.1% (45)	42.5% (127)	36.8% (110)	4.56
Faculty	1.4% (6)	0.2% (1)	5.9% (25)	14.2% (60)	41.0% (173)	37.2% (157)	4.48
Unclassified Staff	0%	2.0% (5)	4.5% (11)	22.8% (56)	42.3% (104)	28.5% (70)	4.47
20's	2.4% (3)	2.4% (3)	4.0% (5)	13.5% (17)	33.3% (42)	44.4% (56)	4.31
30's	0%	0.5% (1)	3.9% (8)	20.3% (42)	41.5% (86)	33.8% (70)	4.55
40's	0.4% (1)	0.8% (2)	6.3% (15)	18.0% (43)	41.4% (99)	33.1% (79)	4.48
50's	1.0% (3)	0.3% (1)	7.0% (21)	14.6% (44)	46.7% (141)	30.5% (92)	4.52
60 or older	1.1% (1)	0%	1.1% (1)	16.1% (15)	38.7% (36)	43.0% (40)	4.60
Asian/Pacific Islander	0%	0%	6.9% (2)	3.4% (1)	34.5% (10)	55.2% (16)	4.62
Black, non-Hispanic	0%	2.0% (2)	6.1% (6)	17.3% (17)	42.9% (42)	31.6% (31)	4.48
Hispanic	0%	0%	0%	9.1% (1)	54.5% (6)	36.4% (4)	4.86
White, non-Hispanic	1.0% (8)	0.6% (5)	5.1% (42)	17.1% (142)	41.8% (346)	34.4% (285)	4.50
Female	1.0% (6)	0.6% (4)	3.7% (23)	16.2% (100)	44.2% (273)	34.2% (211)	4.41

	1 - Strongly Disagree	2	3	4	5 - Strongly Agree	Never Attended	Mean*
Male	0.6% (2)	0.9% (3)	7.7% (27)	17.4% (61)	37.4% (131)	36.0% (126)	4.25
Academic Affairs	0.8% (6)	0.6% (4)	4.8% (34)	16.2% (115)	42.6% (302)	35.0% (248)	4.52
Student Affairs	0%	1.9% (1)	5.7% (3)	24.5% (13)	39.6% (21)	28.3% (15)	4.42
Administration & Finance	1.3% (2)	0.6% (1)	7.5% (12)	15.6% (25)	37.5% (60)	37.5% (60)	4.40
University Advancement	0%	0%	0%	60.0% (3)	40.0% (2)	0%	4.40
President's Office	0%	2.5% (1)	2.5% (1)	12.5% (5)	47.5% (19)	35.0% (14)	4.62
Hammond	0.5% (2)	0.5% (2)	6.7% (26)	18.1% (70)	47.9% (185)	26.2% (101)	4.52
Ponchatoula	0%	1.1% (1)	2.2% (2)	16.3% (15)	45.7% (42)	34.5% (32)	4.63
Tangipahoa	0.6% (1)	1.2% (2)	4.9% (8)	17.2% (28)	41.7% (68)	34.4% (56)	4.50
St. Tammany	2.7% (3)	1.8% (2)	3.6% (4)	18.0% (20)	32.4% (36)	41.4% (46)	4.29
East Baton Rouge	0%	0%	5.5% (4)	8.2% (6)	32.9% (24)	53.4% (39)	4.59
Livingston	0%	0%	3.4% (3)	17.2% (15)	39.1% (34)	40.2% (35)	4.60
Rest of Louisiana	2.0% (1)	0%	3.9% (2)	13.7% (7)	27.5% (14)	52.9% (27)	4.38
Mississippi	25.0% (1)	0%	25.0% (1)	0%	25.0% (1)	25.0% (1)	3.00
Total	0.8% (8)	0.7% (7)	5.2% (50)	16.6% (161)	41.8% (404)	34.9% (37)	4.50

* Mean does not include NA responses.

How satisfied are you with Homecoming?

- Of the 971 faculty and staff who responded, 1% (n=6) indicated that they are very dissatisfied and 27% (n=258) are very satisfied.
- The average rating across all faculty and staff was 4.34.

Figure 4

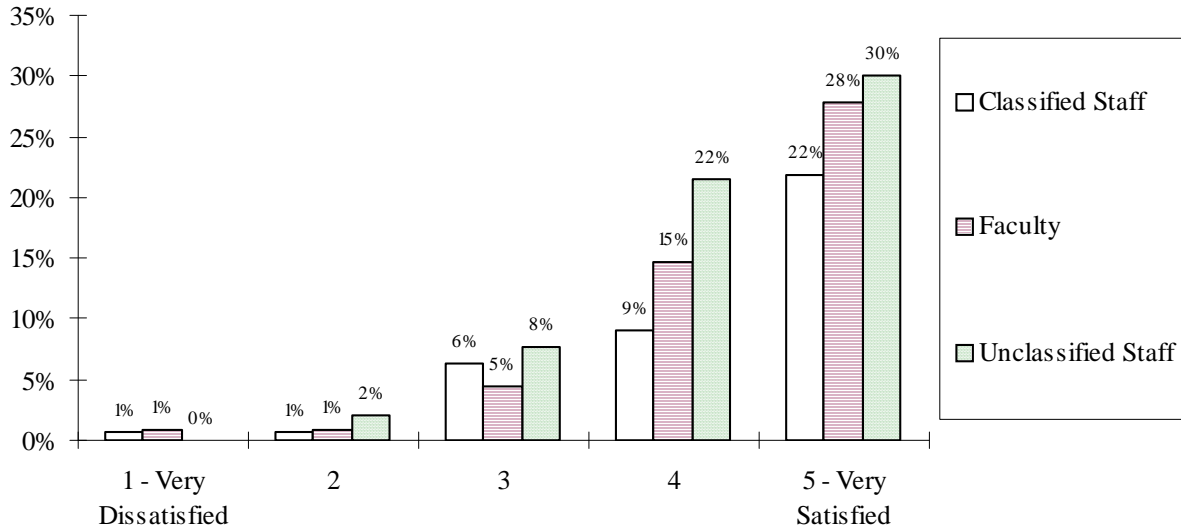


Table 5

	1 - Strongly Disagree	2	3	4	5 - Strongly Agree	Never Attended	Mean*
Classified Staff	0.7% (2)	0.7% (2)	6.3% (19)	9.0% (27)	21.9% (66)	61.5% (185)	4.32
Faculty	0.9% (4)	0.9% (4)	4.5% (19)	14.6% (62)	27.8% (118)	51.2% (217)	4.38
Unclassified Staff	0%	2.0% (5)	7.7% (19)	21.5% (53)	30.1% (74)	38.6% (95)	4.30
20's	1.6% (2)	2.4% (3)	7.1% (9)	16.7% (21)	20.6% (26)	51.6% (65)	4.08
30's	0%	0.5% (1)	5.8% (12)	17.4% (36)	29.5% (61)	46.9% (97)	4.43
40's	0.4% (1)	1.7% (4)	7.5% (18)	15.8% (38)	25.8% (62)	48.8% (117)	4.27
50's	1.0% (3)	1.0% (3)	4.9% (15)	12.1% (37)	28.2% (86)	52.8% (161)	4.39
60 or older	0%	0%	3.2% (3)	10.8% (10)	24.7% (23)	61.3% (57)	4.56
Asian/Pacific Islander	0%	0%	6.9% (2)	13.8% (4)	31.0% (9)	48.3% (14)	4.47
Black, non-Hispanic	0%	1.0% (1)	11.2% (11)	20.4% (20)	19.4% (19)	48.0% (47)	4.12
Hispanic	0%	0%	0%	18.2% (2)	36.4% (4)	45.5% (5)	4.67
White, non-Hispanic	0.7% (6)	1.2% (10)	5.3% (44)	13.9% (116)	27.2% (226)	51.7% (430)	4.36
Female	0.8% (5)	0.8% (5)	3.2% (20)	13.2% (82)	24.7% (153)	57.2% (354)	4.41

	1 - Strongly Disagree	2	3	4	5 - Strongly Agree	Never Attended	Mean*
Male	0.3% (1)	1.7% (6)	10.5% (37)	17.0% (60)	29.8% (105)	40.6% (143)	4.25
Academic Affairs	0.6% (4)	1.1% (8)	4.5% (32)	15.1% (107)	27.2% (193)	51.5% (366)	4.39
Student Affairs	0%	1.9% (1)	13.2% (7)	18.9% (10)	34.0% (18)	32.1% (17)	4.25
Administration & Finance	1.2% (2)	0.6% (1)	9.3% (15)	9.9% (16)	21.0% (34)	58.0% (94)	4.16
University Advancement	0%	0%	16.7% (1)	33.3% (2)	50.0% (3)	0%	4.33
President's Office	0%	2.5% (1)	5.0% (2)	17.5% (7)	25.0% (10)	50.0% (20)	4.30
Hammond	0.5% (2)	1.0% (4)	7.5% (29)	17.8% (69)	33.0% (128)	40.2% (156)	4.37
Ponchatoula	1.1% (1)	0%	3.3% (3)	12.0% (11)	32.6% (30)	51.1% (47)	4.53
Tangipahoa	0.6% (1)	1.2% (2)	6.1% (10)	15.8% (26)	21.8% (36)	54.5% (90)	4.25
St. Tammany	1.8% (2)	2.7% (3)	4.5% (5)	15.3% (17)	20.7% (23)	55.0% (61)	4.12
East Baton Rouge	0%	0%	6.8% (5)	4.1% (3)	15.1% (11)	74.0% (54)	4.32
Livingston	0%	1.1% (1)	2.3% (2)	11.5% (10)	23.0% (20)	62.1% (54)	4.48
Rest of Louisiana	0%	2.0% (1)	5.9% (3)	11.8% (6)	19.6% (10)	60.8% (31)	4.25
Mississippi	0%	0%	0%	0%	0%	100.0% (4)	N/A
Total	0.6% (6)	1.1% (11)	5.9% (57)	14.6% (142)	26.6% (258)	51.2% (497)	4.34

* Mean does not include NA responses.

How satisfied are you with Rock-N-Roar?

- Of the 974 faculty and staff who responded, 1% (n=8) indicated that they are very dissatisfied and 31% (n=306) are very satisfied.
- The average rating across all faculty and staff was 4.39.

Figure 5

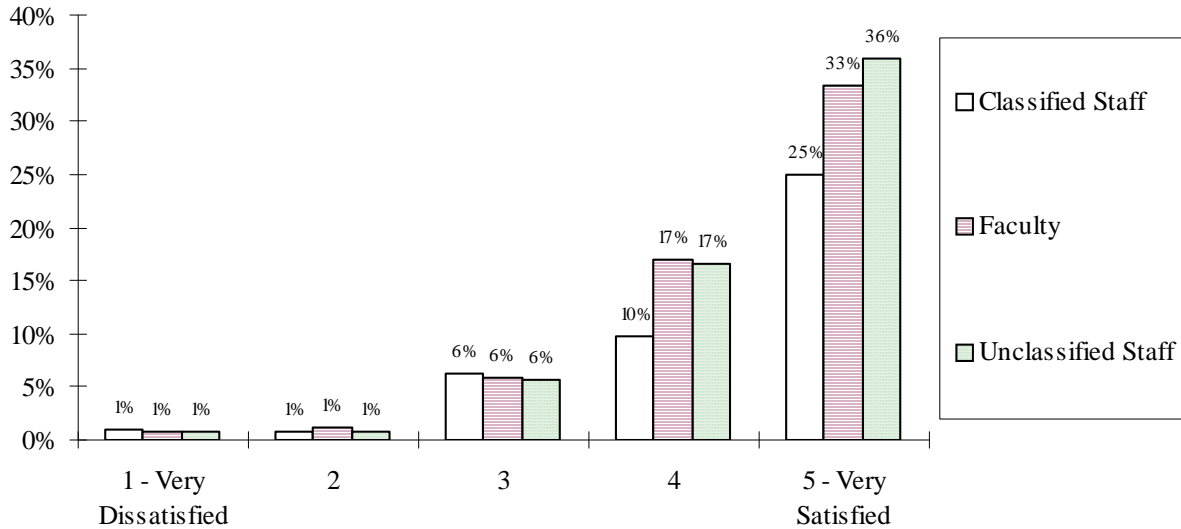


Table 6

	1 - Strongly Disagree	2	3	4	5 - Strongly Agree	Never Attended	Mean*
Classified Staff	1.0% (3)	0.7% (2)	6.3% (19)	9.7% (29)	25.0% (75)	57.3% (172)	4.34
Faculty	0.7% (3)	1.2% (5)	5.9% (25)	16.9% (72)	33.3% (142)	42.2% (180)	4.40
Unclassified Staff	0.8% (2)	0.8% (2)	5.7% (14)	16.6% (41)	36.0% (89)	40.1% (99)	4.44
20's	1.6% (2)	0.8% (1)	8.0% (10)	11.2% (14)	30.4% (38)	48.0% (60)	4.31
30's	0.5% (1)	1.0% (2)	3.9% (8)	17.4% (36)	38.2% (79)	39.1% (81)	4.51
40's	0.8% (2)	0.8% (2)	9.5% (23)	15.8% (38)	27.0% (65)	46.1% (111)	4.25
50's	0.7% (2)	1.3% (4)	4.6% (14)	13.7% (42)	31.9% (98)	47.9% (147)	4.44
60 or older	1.1% (1)	0.0%	3.2% (3)	12.8% (12)	27.7% (26)	55.3% (52)	4.48
Asian/Pacific Islander	0.0%	0.0%	3.4% (1)	20.7% (6)	41.4% (12)	34.5% (10)	4.58
Black, non-Hispanic	0.0%	1.0% (1)	7.1% (7)	17.3% (17)	33.7% (33)	40.8% (40)	4.41
Hispanic	0.0%	0.0%	9.1% (1)	9.1% (1)	45.5% (5)	36.4% (4)	4.57
White, non-Hispanic	1.0% (8)	1.0% (8)	5.9% (49)	14.1% (118)	30.7% (256)	47.4% (396)	4.39
Female	0.6% (4)	0.3% (2)	4.2% (26)	13.2% (82)	33.0% (205)	48.6% (302)	4.51

	1 - Strongly Disagree	2	3	4	5 - Strongly Agree	Never Attended	Mean*
Male	1.1% (4)	2.0% (7)	9.1% (32)	17.0% (60)	28.6% (101)	42.2% (149)	4.21
Academic Affairs	0.7% (5)	0.8% (6)	5.3% (38)	15.7% (112)	32.0% (228)	45.4% (324)	4.42
Student Affairs	0.0%	1.9% (1)	15.1% (8)	15.1% (8)	35.8% (19)	32.1% (17)	4.25
Administration & Finance	1.2% (2)	0.6% (1)	6.8% (11)	11.1% (18)	27.2% (44)	53.1% (86)	4.33
University Advancement	16.7% (1)	0.0%	0.0%	16.7% (1)	50.0% (3)	16.7% (1)	4.00
President's Office	0.0%	2.5% (1)	2.5% (1)	7.5% (3)	30.0% (12)	57.5% (23)	4.53
Hammond	0.5% (2)	0.8% (3)	6.6% (26)	16.9% (66)	37.3% (146)	37.9% (148)	4.44
Ponchatoula	0.0%	1.1% (1)	7.7% (7)	12.1% (11)	31.9% (29)	45.9% (51)	4.42
Tangipahoa	1.8% (3)	1.2% (2)	5.5% (9)	11.6% (19)	28.7% (47)	51.2% (84)	4.31
St. Tammany	1.8% (2)	1.2% (2)	5.5% (9)	11.6% (19)	28.7% (47)	51.2% (84)	4.23
East Baton Rouge	0.0%	1.4% (1)	4.1% (3)	4.1% (3)	27.0% (20)	63.5% (47)	4.56
Livingston	1.1% (1)	1.1% (1)	3.4% (3)	15.9% (14)	25.0% (22)	53.4% (47)	4.34
Rest of Louisiana	0.0%	0.0%	5.9% (3)	15.7% (8)	23.5% (12)	54.9% (28)	4.39
Mississippi	0.0%	0.0%	0.0%	0.0%	25.0% (1)	75.0% (3)	5.00
Total	0.8% (8)	0.9% (9)	6.0% (58)	14.6% (142)	31.4% (306)	46.3% (451)	4.39

* Mean does not include NA responses.

How satisfied are you with Golden Silence?

- Of the 964 faculty and staff who responded, 1% (n=6) indicated that they are very dissatisfied and 17% (n=165) are very satisfied.
- The average rating across all faculty and staff was 4.38.

Figure 6

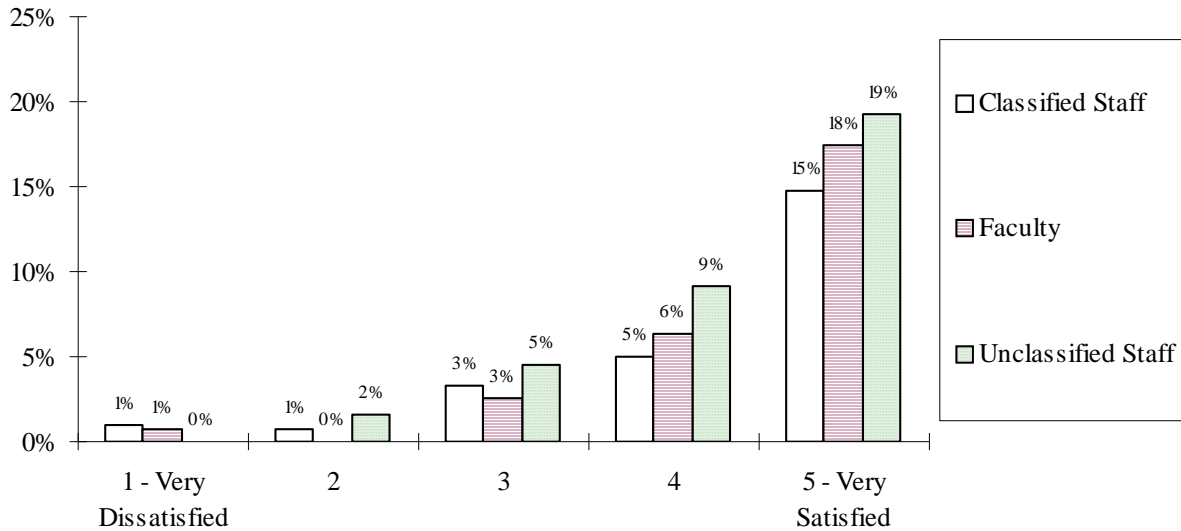


Table 7

	1 - Strongly Disagree	2	3	4	5 - Strongly Agree	Never Attended	Mean*
Classified Staff	1.0% (3)	0.7% (2)	3.3% (10)	5.0% (15)	14.7% (44)	75.3% (225)	4.28
Faculty	0.7% (3)	0.0%	2.6% (11)	6.4% (27)	17.5% (74)	72.7% (307)	4.47
Unclassified Staff	0.0%	1.3% (4)	4.5% (11)	9.1% (22)	19.3% (47)	65.4% (159)	4.33
20's	1.6% (2)	2.4% (3)	4.8% (6)	6.4% (8)	13.6% (17)	71.2% (89)	3.97
30's	0.0%	0.0%	3.9% (8)	6.8% (14)	14.1% (29)	75.2% (155)	4.41
40's	0.8% (2)	0.0%	4.2% (10)	8.8% (21)	15.1% (36)	71.0% (169)	4.29
50's	0.3% (1)	1.0% (3)	2.3% (7)	5.9% (18)	20.8% (63)	69.6% (211)	4.51
60 or older	1.1% (1)	0.0%	1.1% (1)	3.3% (3)	21.7% (20)	72.8% (67)	4.64
Asian/Pacific Islander	0.0%	0.0%	3.4% (1)	6.9% (2)	13.8% (4)	75.9% (22)	4.43
Black, non-Hispanic	1.1% (1)	2.1% (2)	8.5% (8)	10.6% (10)	8.5% (8)	69.1% (65)	3.76
Hispanic	0.0%	0.0%	0.0%	9.1% (1)	27.3% (3)	63.6% (7)	4.75
White, non-Hispanic	0.6% (5)	0.5% (4)	2.8% (23)	6.2% (51)	18.1% (150)	71.9% (596)	4.45
Female	0.7% (4)	0.5% (3)	1.8% (11)	5.4% (33)	16.6% (102)	75.1% (462)	4.48

	1 - Strongly Disagree	2	3	4	5 - Strongly Agree	Never Attended	Mean*
Male	0.6% (2)	0.9% (3)	6.0% (21)	8.9% (31)	18.1% (63)	65.6% (229)	4.25
Academic Affairs	0.6% (4)	0.3% (2)	3.1% (22)	6.4% (45)	17.2% (121)	72.5% (511)	4.43
Student Affairs	0.0%	1.9% (1)	7.5% (4)	11.3% (6)	22.6% (12)	56.6% (30)	4.26
Administration & Finance	1.3% (2)	1.3% (2)	3.1% (5)	6.3% (10)	15.0% (24)	73.1% (117)	4.21
University Advancement	0.0%	0.0%	0.0%	33.3% (2)	33.3% (2)	33.3% (2)	4.50
President's Office	0.0%	2.5% (1)	2.5% (1)	2.5% (1)	15.0% (6)	77.5% (31)	4.33
Hammond	0.5% (2)	1.0% (4)	4.4% (17)	7.5% (29)	22.3% (86)	64.2% (248)	4.40
Ponchatoula	0.0%	0.0%	1.1% (1)	4.4% (4)	22.0% (20)	72.5% (66)	4.76
Tangipahoa	0.6% (1)	0.6% (1)	4.3% (7)	7.4% (12)	16.6% (27)	70.6% (115)	4.31
St. Tammany	1.8% (2)	0.9% (1)	3.7% (4)	6.4% (7)	11.9% (13)	75.2% (82)	4.04
East Baton Rouge	0.0%	0.0%	2.7% (2)	2.7% (2)	8.1% (6)	86.5% (64)	4.40
Livingston	0.0%	0.0%	0.0%	7.0% (6)	10.5% (9)	82.6% (71)	4.60
Rest of Louisiana	2.0% (1)	0.0%	2.0% (1)	7.8% (4)	7.8% (4)	80.4% (41)	4.00
Mississippi	0.0%	0.0%	0.0%	0.0%	0.0%	100.0% (4)	N/A
Total	0.6% (6)	0.6% (6)	3.3% (32)	6.6% (64)	17.1% (165)	71.7% (691)	4.38

* Mean does not include NA responses.

Have you joined the Alumni Association at the faculty/staff reduced price?

- Of the 964 faculty and staff who responded, 22% (n=208) indicated that they have joined and 77% (n=733) have not.

Figure 7

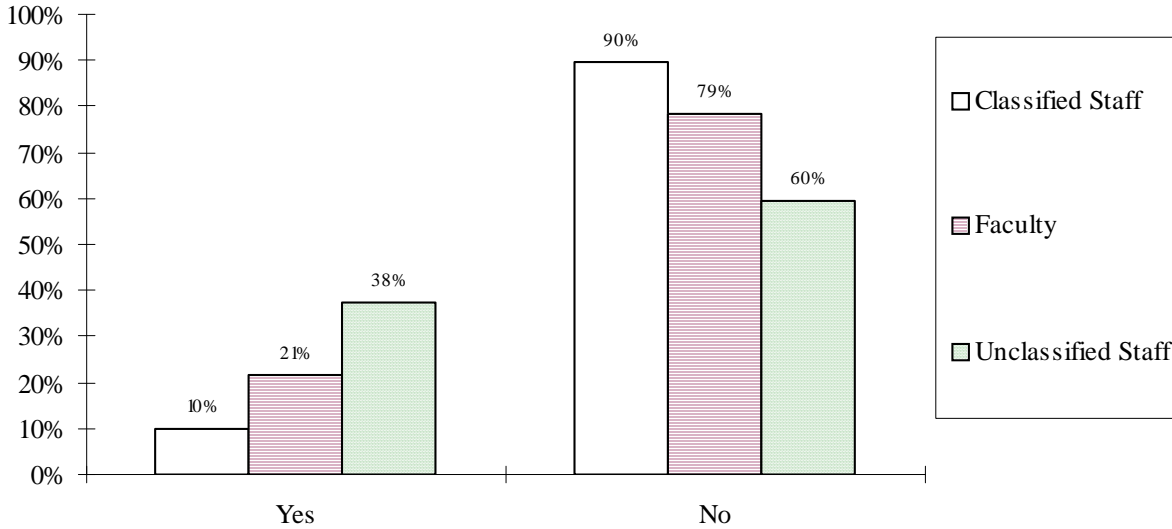


Table 8

	Yes	No
Classified Staff	9.9% (29)	89.8% (263)
Faculty	21.4% (89)	78.6% (327)
Unclassified Staff	37.5% (90)	59.6% (143)
20's	19.8% (24)	77.7% (94)
30's	28.3% (58)	71.2% (146)
40's	17.9% (43)	81.7% (196)
50's	21.2% (62)	77.8% (228)
60 or older	23.3% (21)	76.7% (69)
Asian/Pacific Islander	6.9% (2)	93.1% (27)
Black, non-Hispanic	28.7% (27)	71.3% (67)
Hispanic	9.1% (1)	90.9% (10)
White, non-Hispanic	21.9% (178)	77.1% (628)
Female	22.9% (14)	76.4% (467)
Male	20.1% (68)	78.7% (266)
Academic Affairs	22.9% (159)	77.1% (534)

Student Affairs	34.0% (18)	66.0% (35)
Administration & Finance	12.7% (20)	87.3% (138)
University Advancement	33.3% (2)	66.7% (4)
President's Office	23.1% (9)	56.4% (22)
Hammond	27.4% (104)	71.3% (271)
Ponchatoula	23.6% (21)	76.4% (68)
Tangipahoa	16.8% (27)	83.2% (134)
St. Tammany	22.6% (24)	77.4% (82)
East Baton Rouge	16.0% (12)	82.7% (62)
Livingston	14.3% (12)	83.3% (70)
Rest of Louisiana	16.0% (8)	84.0% (42)
Mississippi	0.0%	100.0% (4)
Total	21.9% (208)	77.2% (733)

Those who have not joined were asked what is the main reason they have not joined. There were 319 responses. The most commonly cited reason for not joining (21%, n=67) was that the respondent is not an alumni of Southeastern. Fourteen percent (14%, n=45) were unaware of some aspect of the program, either the reduced cost, the fact that they could, etc. The next most commonly cited reason (13%, n=42) was simply no interest or no desire to join. Eight percent (8%, n=24) indicated they have no time to join, 6% (n=20) indicated the cost is too high for them, and 5% (n=15) did not think there were any benefits or the cost outweighed the benefits. A verbatim copy of the comments can be found in Appendix B.

Potential Programs

Respondents were asked what programs they would like to see offered by the Alumni Association. There were 82 respondents to the question. Over a fourth (29%) simply stated that Alumni was doing a good job or they did not know what other programs could be offered. The remaining 58 comments varied greatly, there was no emerging theme or particular program that was a focus of the comments. All the comments can be found verbatim in Appendix C.

Overall Satisfaction

- Of the 964 faculty and staff who responded, 1% (n=1) indicated that they are very dissatisfied with the Alumni Office and 33% (n=324) are very satisfied.
- The average rating across all faculty and staff was 4.28.

Figure 7

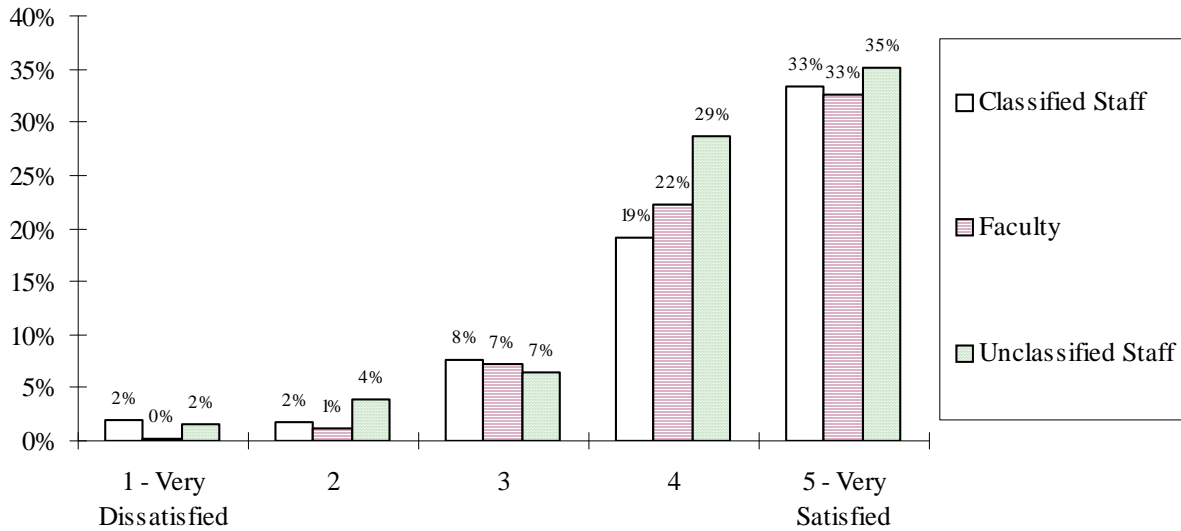


Table 8

	1 - Strongly Disagree	2	3	4	5 - Strongly Agree	NA	Mean*
Classified Staff	2.0% (6)	1.7% (5)	7.6% (23)	19.2% (58)	33.4% (101)	36.1% (109)	4.26
Faculty	0.2% (1)	1.2% (5)	7.2% (30)	22.2% (93)	32.5% (136)	36.8% (154)	4.35
Unclassified Staff	1.6% (4)	4.0% (10)	6.5% (16)	28.6% (71)	35.1% (87)	24.2% (60)	4.21
20's	3.3% (4)	3.3% (4)	12.3% (15)	21.3% (26)	29.5% (36)	30.3% (37)	4.01
30's	1.4% (3)	1.0% (2)	5.3% (11)	23.0% (48)	36.8% (77)	32.5% (68)	4.38
40's	0.8% (2)	2.9% (7)	5.4% (13)	28.5% (69)	24.8% (60)	37.6% (91)	4.18
50's	0.7% (2)	2.0% (6)	7.9% (24)	19.1% (58)	38.2% (116)	32.2% (98)	4.36
60 or older	0.0%	1.1% (1)	6.5% (6)	22.8% (21)	38.0% (35)	31.5% (29)	4.43
Asian/Pacific Islander	0.0%	0.0%	7.4% (2)	22.2% (6)	40.7% (11)	29.6% (8)	4.47
Black, non-Hispanic	0.0%	2.0% (2)	7.1% (7)	22.4% (22)	27.6% (27)	40.8% (40)	4.28
Hispanic	0.0%	0.0%	9.1% (1)	18.2% (2)	45.5% (5)	27.3% (3)	4.50
White, non-Hispanic	1.3% (11)	2.2% (18)	7.0% (58)	23.1% (192)	33.8% (281)	32.7% (272)	4.27
Female	0.8% (5)	1.8% (11)	5.1% (32)	22.2% (139)	34.8% (218)	35.3% (221)	4.37

	1 - Strongly Disagree	2	3	4	5 - Strongly Agree	Never Attended	Mean*
Male	1.7% (6)	2.6% (9)	10.8% (37)	24.2% (83)	30.9% (106)	29.7% (102)	4.14
Academic Affairs	0.6% (4)	1.5% (11)	6.3% (45)	18.3% (130)	39.4% (280)	33.8% (240)	4.36
Student Affairs	1.9% (1)	1.9% (1)	5.7% (3)	13.2% (7)	30.2% (16)	22.2% (36)	4.07
Administration & Finance	1.9% (3)	1.2% (2)	8.0% (13)	13.6% (22)	22.2% (36)	53.1% (86)	4.22
University Advancement	0.0%	0.0%	16.7% (1)	16.7% (1)	50.0% (3)	16.7% (1)	3.83
President's Office	0.0%	2.5% (1)	12.5% (5)	17.5% (7)	42.5% (17)	25.0% (10)	3.77
Hammond	1.0% (4)	1.8% (7)	9.3% (36)	24.9% (96)	37.3% (144)	25.6% (99)	4.29
Ponchatoula	0.0%	0.0%	7.8% (7)	26.7% (24)	35.6% (32)	30.0% (27)	4.40
Tangipahoa	1.8% (3)	1.8% (3)	6.0% (10)	21.4% (36)	30.4% (51)	38.7% (65)	4.25
St. Tammany	1.9% (2)	3.8% (4)	3.8% (4)	17.1% (18)	31.4% (33)	41.9% (44)	4.25
East Baton Rouge	0.0%	1.3% (1)	8.0% (6)	16.0% (12)	26.7% (20)	48.0% (36)	4.31
Livingston	2.2% (2)	3.4% (3)	5.6% (5)	29.2% (26)	30.3% (27)	29.2% (26)	4.16
Rest of Louisiana	0.0%	1.9% (1)	1.9% (1)	15.4% (8)	30.8% (16)	50.0% (26)	4.50
Mississippi	0.0%	25.0% (1)	0.0%	50.0% (2)	25.0% (1)	0.0%	3.75
Total	1.1% (11)	2.1% (20)	7.1% (69)	22.9% (222)	33.4% (324)	33.3% (323)	4.28

* Mean does not include NA responses.

Appendix A

2007-2008 Survey of Faculty and Staff

Appendix B

Main reason for not joining Alumni Association
at faculty/staff rate

- Fairly new to the school
- I'm not an Alum.
- I'm not sure.
- I think I should join soon.
- \$
- I have plenty of things to do. I don't need to join every association.
- No time.
- Did not know about option
- Just haven't realized a strong need/desire to do so
- Not an Alum
- no interest
- Forget to
- Not an alum
- Do not what the benefits of membership would be.
- I have not obtained information about this
- I have in the past, but I forgot to do so this past year.
- Not an Alumnus of this University
- Not interested at this time.
- Lazy
- I'm an Alumni at a different University
- forget
- Time and location from home.
- not interested
- Too recent an addition
- I am in the UNO Alumni Assoc.
- I am not an Alumni of SELU
- not much use
- I'm not a Southeastern alum.
- Just haven't thought about joining.
- Don't want to.
- work in the evenings
- Actually, it slipped my mind because I have been too busy at work and in my personal life.
- Not interested; not an active participant in all of their events.
- Thought this was for Alumni students
- Don't know what it is.
- I do not have the money.
- Not an SLU alum - don not want to intrude on those who are.
- not interested
- Didn't think about it
- I didn't understand why I should.
- I was unaware that I was eligible to do so.
- I have physical problems that prohibit me from participating in many of the events because I can't walk very far or stand for any length of time. I feel I contribute to the university in other ways.

- Did not know that Faculty/Staff got a discount
- I don't see any advantage in it for me.
- Lack of Relevance
- No information on it.
- I have not thought about it
- not an alumni
- Reside outside Hammond area - don't attend events
- Forgot
- I don't like to "join" things.
- not interested
- It was mainly due to my negligence.
- Forgetfulness
- Don't want to. Not an Alumnus.
- Don't care to
- Not aware
- Have not been here long enough
- I did not know about
- Didn't know about it.
- I am a staff member and a graduate student.
- Still a member through free year of graduation.
- I did not attend or graduate from Southeastern.
- Just graduated and have a year membership already
- Not Alumni
- I'm not an Alumni of SELU
- Didn't know I could
- didn't know
- no need
- It's inappropriate.
- No real reason. I just have not joined.
- I am not an Alumnus of SLU.
- I am not an Alumni.
- I belong to two other alumni associations.
- Did not know it was available.
- I live in another town, and such things are hard for me to get to. Gas is now a factor.
- Temporary employment
- I think fees are too high for alumni and there is not enough incentive - no extra perks
- Did not know about this
- no real need/benefits?
- live away from campus
- Didn't see the need
- no reason
- I am not an Alumni
- procrastinated
- Do not have the time

- I'm too busy doing other things
- I am already an alumnus.
- Simply have not gotten around to it.
- I am not an alumnus of this school.
- I'm not an alumnus of SLU.
- Would like update on status of our alumni membership at some annual meeting such a college of business enc. Meeting.
- Only been faculty/staff for one month
- I didn't have enough information. I didn't know I , as a faculty member, could be considered an alum.
- not interested
- Not an alumni yet.
- Not alumni
- Didn't realize there's a reduce price. Haven't had time to check into it.
- I am not a SLU alumni. It is my understand that the program is for SLU graduates.
- Not an Alumni. Husband has joined.
- I need to join.
- I am member of my own alumni associations from my former institutions of learning.
- Keep forgetting to sign up.
- I could not locate this information on the Alumni page, nor did I or do I know what that price is.
- Dues paid last year before joining staff
- Not Alumnus
- I did at one point but, don't know if I renewed it. I'm a cheapskate.
- no need
- No benefits, besides discount, to faculty/staff. Does not offer anything that is not already available.
- Do not use the benefits offered by membership.
- I did not graduate from SLU.
- time & \$
- Relatively new employee, will join next year.
- Other interests.
- New to Southeastern - employed only 4.5 weeks.
- no extra time
- not interested
- I am not a college graduate and would feel awkward doing so.
- Don't see the benefit of joining
- new faculty
- Live in Baton Rouge.
- Sign up once, and it doubled my junk mail in the mailbox, never seen an organization beg for money like this group.
- I live to far away.
- Haven't taken the time to fill out form
- I wasn't aware there was one.

- was a member prior to employment. Alumni disappointed me greatly and I will not join again. Nor will I attend their functions.
- not interested
- Do not live in Hammond
- no time
- not an alumnus
- What are the benefits?
- Not sure, I just started and haven't looked into it yet.
- Have not graduated.
- See no benefits; not sure staff is eligible if not alumni.
- Wasn't directly asked and don't know how
- Not aware that I could join - I would like to.
- Never was interested.
- forgot to join
- Not aware I could do so.
- not interested
- I am not a Southeastern graduate.
- not interested at this time.
- not interested
- Did not know I could
- No reason!
- Circumstances are such that money is at a premium.
- Not applicable to me
- My salary is below poverty level.
- Was not aware - perhaps because I am not an alum.
- very busy w/ family, etc.
- I am just a contract employee that just moved back here from overseas. I'm also planning on going back overseas so I don't want to invest in something I can't get fully involved in.
- Do not feel necessary
- Not interested
- I don't know of any benefits of joining
- I am not a joiner.
- Not interesting in socializing
- My lack of disposable income.
- Husband is a member
- Don't have a degree.
- not an alum
- not appealing
- not interested - don't know why I'd want to do it.
- On a budget - only family member employed.
- Have not thought about it
- Not an alumni
- no interest
- Didn't know you could join if you weren't a school alumni

- I joined as an actual alumni prior to working at SLU.
- time
- not interested
- Why pay for one more thing I don't need/want?
- I attended a football game in the fall and was very frustrated that I had to pay 15.00 to get in!! Students are free. Can the Alumni Association do something about this? This shouldn't be!!
- Didn't know about it.
- Not a SLU grad.
- no interest
- I am not an Alumnus of SLU
- not an alumni
- Didn't know about reduced price.
- Time
- not alumni
- Time constraints.
- I graduated from a different university.
- Not an alumni
- not alumni
- not interested
- Never aware this was an option
- Not enough time with work and family obligation
- Haven't had time to sign-up
- saving \$
- My money had to go toward professional conferences.
- Haven't had the time to do so yet - but will soon
- not interested
- membership in other Alumni and professional association.
- Not alumnus.
- busy
- I am located at an off campus location and don't live near campus.
- not interested.
- Not aware you can join
- expenses
- Don't have time to get involved in more activities.
- Not in my budget even with a reduced price
- I have overlooked it.
- Never thought about it.
- I intend to.
- was not aware of cost
- Don't have enough time in a day.
- Haven't had time.
- I would not waste my money on Southeastern because of Physical Plant Director Byron Patterson

- Did not know about it.
- I never took the time to join
- just because
- I never saw a reason to join.
- did not know I could!
- not an alumnus
- I already donate an abundance of service to the University, as a whole.
- I'm not an alumni
- Just never have, I guess. Have considered it though.
- Maybe after retirement; no particular reason for not joining now.
- I'm on a tight budget at the moment, and my time schedule is very booked. I probably wouldn't attend many events.
- Can't afford to
- I am not an alumni of Southeastern.
- I did not know about it!
- Just do not care to.
- If it were payroll deducted.
- Not enough personal time to be involved
- New employee, what is it?
- Not aware I could
- I'm not an Alum.
- Would like to graduate first.
- neglect
- Don't want to.
- not an Alumni
- Busy schedule
- Special cost for outside companies or group option.
- \$
- Forgot
- cost/benefit
- Husband is alumni member
- Not a need to join.
- Not interested. Already donate to Development Fund.
- not interested
- not an alumni
- not interested
- Not Alumni
- not retired yet
- They waist too much money
- I am not an Alumni
- I have only been employed @ Southeastern for three months.
- Just haven't gotten around to it, but would like to.
- Financial Difficulties
- keep forgetting

- was unaware I could as faculty/staff
- I am not a SELU Alumni
- not an alum of Southeastern
- Would not likely participate in activities.
- I'm very busy
- Up to now, I haven't considered the benefits of joining the Alumni Assoc.
- Too focused on Football
- Forgot
- Live in BR
- Don't really know anything about it.
- because it is not worth the money
- not an alumni
- Limited free time
- regular alum, did not renew under reduced price because time got away from me
- Struggle to make ends meet.
- Not an alumnus
- Just haven't thought about it
- No real benefit for me to join. They need better incentives.
- Don't want to.
- Never thought of it as a faculty organization.
- Not aware of how joining would benefit me personally
- I feel that I already make financial contributions to the U. My husband drives to the U to troubleshoot on holidays, weekends, and vacations.
- I'm not an Alumni
- No, time to do it
- Awareness
- Financial - Belonged to Association for awhile – Master's at Southeastern. Will at some time or another join.
- I have no time to use the bathroom these days, let alone become involved in something else.
- I reside in another town. I can't attend most of events.
- I've only been here since March 10th.
- Lazy
- I am not Graduate from here
- I am not Southeastern alum
- Do not want to.
- not an alumni
- Don't see its relevance
- Not an alumni graduate of Southeastern
- Alumni association's are and should be for Alumni. I am not an Alumni and I have no interest in the organizational group other than it is needed for the Alumni who wish to join.
- Because I would just like to see a more "faculty friendly" institution.
- Not aware
- Joined in the past as an Alum
- Joined as a new MSN graduate

- Personal finances
- I'm not a Southeastern Alumni
- Live out of town
- not interested
- Not a Southeastern Alum
- No specific reason
- No reason - haven't took the time to
- Scheduling conflicts
- I'm not alum - I belong to the Associations of my schools
- No reason perceived
- Not interested
- No particular reason.
- Not an alum?
- I work off campus and do not get to Hammond often
- Full price did not know about discount.
- I'm not an alumna, already belong to 2 associations.
- no reason
- Have not taken the time.
- Too expensive.
- money
- Perceived benefits of membership
- I don't know about it, I may not join due to busy life.
- Unaware of it.
- I am a SLU Alumni and faculty, but do not receive a reduced rate.
- I am not an Alumni
- cost

Appendix C

What programs would you like to see offered by the Alumni Association?

- I believe Alumni Asso. Has done enough service to the community.
- satisfied
- Help us better keep track of our departments Alumni.
- Special ser program social/meetings etc.
- I am satisfied with their activities at this time.
- webmail
- Networking of professionals or Business for sales opportunities similar to a chamber of commerce. Buy from other SLU Alumni
- None that I can think of
- Raise the endowment. Cooperate with other constituencies to resolve the conflict between the university's name and URL, plus related problems.
- Don't know right now
- Commute too far to attend
- Everything is great!
- Reunion programs for special groups like Orientation Leader Reunion, All Greek Reunion, SGA, CAB, Student orgs, etc.
- More information on the association
- Trips, vacations for faculty/staff
- more support for area Greek alumni/alumnae
- They're good now
- I think they are doing a great job. I do not have any new ideas at this time.
- Would like to see a better coordination with all athletic events throughout the academic year
- More events for Alumni
- More marketing to grow the association.
- I think they do a really fine job offering faculty - involved programs.
- I can't think of anything.
- no suggestions at this time.
- Fund raising for student scholarships
- free membership to the gym
- "From the horse mouth" for Alumni to High Schools & Alumni to students for their prospective field for recruitment and retention – Alumni to faculty for "what's needed" to be successful in their field to better prepare students for real world.
- The Alumni assn helped to get a recent list with addresses for alumni in our program. Do other depts. Know about this service?
- Something geared to young alumni
- I would like to see equal support for university events and not just sport events.
- Free membership to PSAC.
- More programs for just faculty/staff interaction.
- Would like to see more presence at smaller events - set up booths at academic events such as Science Olympiad; donate prizes.
- not sure
- doing fine
- Can't think of any.
- My wife and I thoroughly enjoyed Rock-N-Roar.

- None in particular; my interests are primarily outside of my job at Southeastern.
- More gathers for the University
- Community connections
- Maybe a program for older students - to help them graduate - a sort of buddy/mentor system.
A scholarship for part time students - nontraditional.
- Seminars/lectures/classes
- none
- Help us organize info about Alumni of our dept.
- More programs for Alumni without children - they gear many programs to the children. More events and active involvement.
- More activities that encourage Grad seniors to join
- Reduced cost @ football games (tickets). Availability of SLU merchandise - Fleur de Lion bumper stickers!!!
- Bonanza, Will + Grace
- I really anything by the Alumni Association. Ms. Kathy Pittman is always nice and helpful. She makes everything great.
- free parking
- free parking
- more social
- more employee functions
- Incentive to turn out at Athletic games (i.e. Football, baseball, basketball, etc.)
- The Alumni Association offers many activities throughout the year.
- community service retreats
- sports ticket to 50% off for worker
- Nothing
- More networking opportunities for Alumni that cannot come to weekday functions.
- No particular programs, but membership restricted to “true” alumni (graduates)
- Not sure, perhaps free membership for one year for new members. This would give you a chance to see if it would fit into your schedule.
- Not sure at this time
- No preference
- Unsure
- I am unsure as to what additional programs would be beneficial to alumni, faculty & staff, and SLU.
- Lecture series - discounts on resources on campus
- Just continue their excellent work
- Onsite cooking @ tailgate. Better menu @ convocation - no BBQ chicken.
- If possible, use of campus swimming pool for water aerobics, without complete membership for Pennington. May be something for Recreational Sports and Wellness.
- Programs which allow for more interaction with faculty from other departments
- More off campus (outreach)
- More college - specific activities (Open Houses)
- Programs should be determined by the Alumni and not faculty.
- More staff oriented events to include family. More Alumni oriented events to include family.

- Not sure at this time.
- Reunions
- Organized Athletic event support to attendance
- I enjoy all the programs that attempt to increase Southeastern pride alumni, faculty, and students.
- Better communication and involvement with minority students
- Lectures on community issues. Leisure classes.
- Fund raising!
- Information on where our alumni work, would help with current students.