

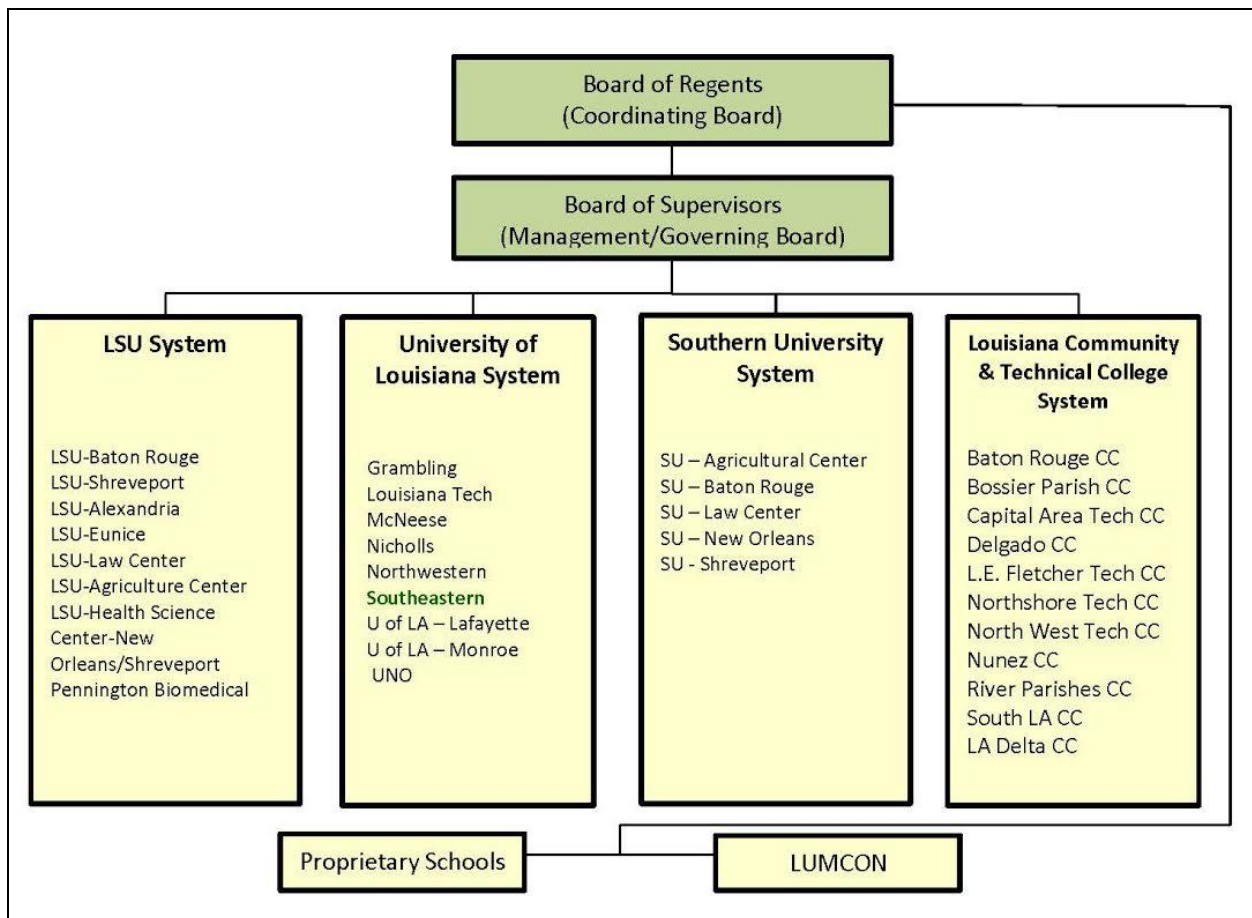


SOUTHEASTERN

LOUISIANA UNIVERSITY

Governing Boards

The governing boards of higher education in Louisiana are depicted in the following chart. Southeastern Louisiana University is one of nine state institutions under the management of the University of Louisiana System.



Louisiana Public Postsecondary Education Governance Structure

Board of Regents

- ◆ Policymaking and coordinating board for postsecondary education
- ◆ Represent the postsecondary education system to the Governor and the Legislature
- ◆ Formulate master plan
- ◆ Establish role, scope and mission for systems and institutions
- ◆ Develop and adopt formula for equitable distribution of funds
- ◆ Approve degree programs, departments of instruction, etc.
- ◆ Formulate operating budget recommendations
- ◆ Formulate capital budget recommendations

Management Boards

**LSU System,
University of Louisiana System,
Southern University System,
LA Community & Technical
College System**

- ◆ Supervise and manage systems
- ◆ Award certificates, confer degrees and issue diplomas
- ◆ Receive and expend appropriated funds, according to the master plan
- ◆ Determine student fees
- ◆ Purchase land and acquire buildings, subject to approval of Regents
- ◆ Employ and approve employment, fix salaries, duties and functions of personnel
- ◆ Oversee financial operations of schools

BOARD OF REGENTS

Article VIII, Section 5, of the 1974 Constitution of the State of Louisiana, Act 313 (1975), and *Louisiana Revised Statutes* 17 (3125) *et seq.* provide for the Board of Regents and state that the Board shall plan, coordinate, and have budgetary responsibilities relative to public institutions of higher education as provided by law.

The *Policies and Procedures Manual* of the Board of Regents contains additional information on the responsibilities of the Board of Regents and the systems it oversees. Click [here](#) to view the Policies and Procedures of the Board of Regents for Academic and Student Affairs.

UNIVERSITY OF LOUISIANA SYSTEM, BOARD OF SUPERVISORS

Powers of management over Southeastern Louisiana University not specifically vested by the Constitution in the Board of Regents are reserved to the University of Louisiana System. Click [here](#) to view the duties, powers, and functions of this System are stated in the *Rules* of the University of Louisiana System, Part One – Bylaws, Section V. Duties, Powers, and Functions.