

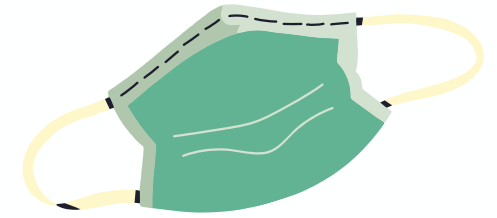


Speaker Panel: Business Students' Questions and Concerns in a Pandemic

March 16, 2021, TEC 1022

3:30 – 5:00 pm

Live Stream: KSLU Radio's Facebook page



- **JEREMY B. WIGGINTON, MD, FAAFP, CPHQ**
MEDICAL DIRECTOR
POPULATION HEALTH ANALYTICS & NETWORK INNOVATION
BLUE CROSS AND BLUE SHIELD OF LOUISIANA
- **PAIGE L. MOODY LPC, LMFT, NCC, CCTP**
COUNSELOR
UNIVERSITY COUNSELING CENTER
SOUTHEASTERN LOUISIANA UNIVERSITY
- **MIKKI KELLEY, PHR**
SENIOR VICE PRESIDENT
HUMAN RESOURCES MANAGER
FIRST GUARANTY BANK
- **RANDY VICKNAIR, CRC**
SENIOR VICE PRESIDENT
CHIEF LENDING OFFICER
FIRST GUARANTY BANK

SOUTHEASTERN
LOUISIANA UNIVERSITY

College of Business

Presented by:



**FIRST
GUARANTY
BANK**

Member FDIC